

# dedolight®

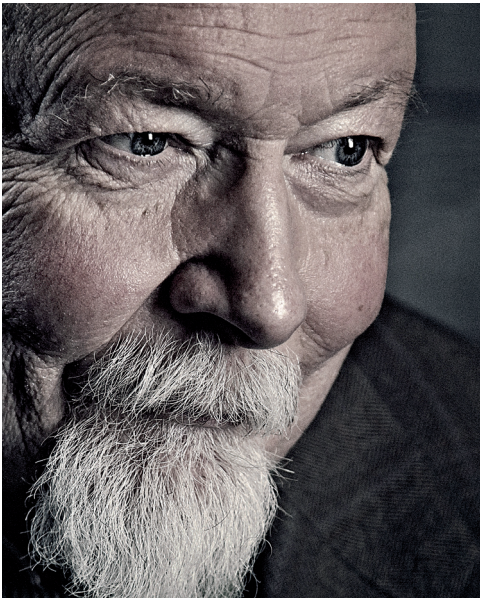
PRECISION LIGHTING INSTRUMENTS



## NEWS 2014

ENGLISH 03/2014

# DEDO AND COMPANY



My name is Dedo.

I am a cameraman/Director of Photography.

I've shot documentaries, commercials, art films, features and theatre plays in over forty countries. I am also a high-speed specialist (film and video). Today, dedolight is widely known and acclaimed for precision lighting instruments.

I am very proud of my unique team at dedolight. No manufacturer in our field has as many experienced, recognized and practicing Directors of Photography as we do.

We listen to and enjoy the dialogue with some of the best known cinematographers shooting multi-million dollar blockbusters as well as the intensely creative small crews who shoot under street fighter conditions. Many ideas and constructive criticism comes from these colleagues.

Our research and development is done "in-house" and I am very proud of our exceptional team of optical engineers, electronic geniuses, computer gurus and seasoned high class mechanical engineers. We collaborate with several light source manufacturers and continue to develop better, more efficient and precise light sources. We combine leading edge optical design (over 30 patents) with the most modern fixture and ballast concepts. We remain committed to create the best possible tools and control devices in precision lighting for the professional.

We are proud to introduce the latest marriage of prime class LED technology with our patented double aspherical dedolight optics and LED panel soft lights.

dedolight provides the highest optical precision and unique tools for light control and light shaping. These are available in an eco-friendly halogen version, new tungsten metal halide – interchangeable with our daylight metal halide sources and several versions of the best LED technologies in the dedocolor® quality! We value the extraordinary team of dedolight agents around the world. Many share common roots in the practicing profession and an enthusiasm and dedication to the art of lighting.

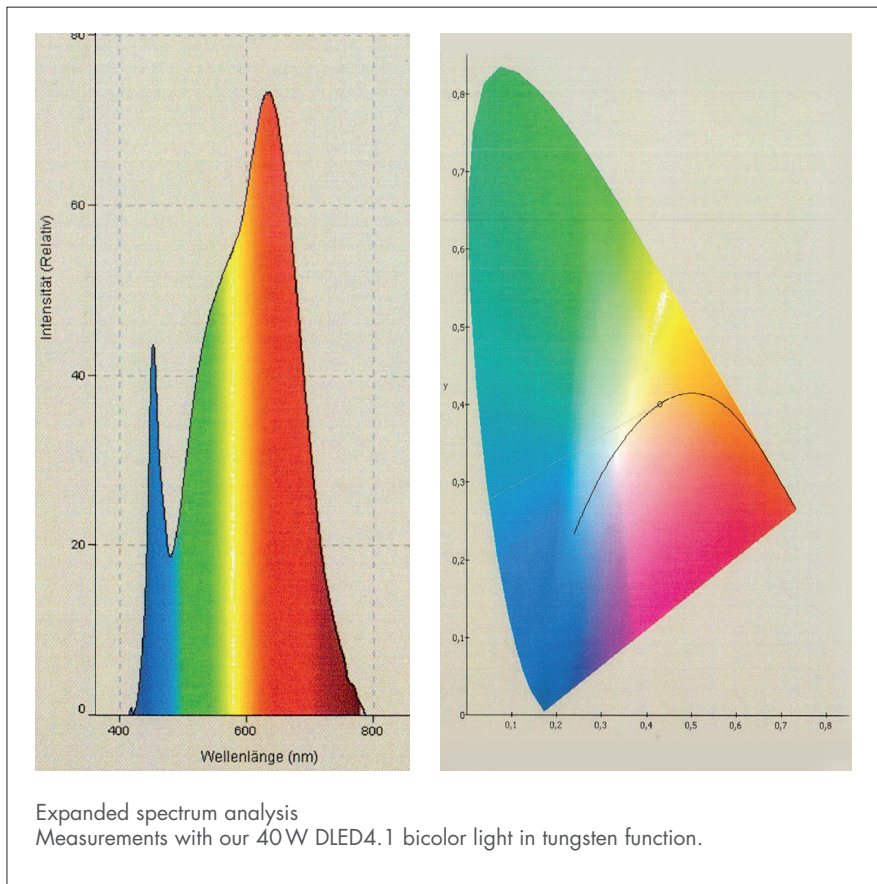
# LED BREAKTHROUGH

Digital cameras see LED light differently than tungsten/daylight sources. Additionally cameras interpret these light sources differently from each other. Color temperature meters are unable to see the full spectrum and therefore do not work for the evaluation of LED light. Samples are only taken in three or four places of the spectrum (narrow band filters). Spectrum analysis and CRI values offer a serious step for evaluation, but usually do not include colors called R9, which is a very important and critical red value, and R13 - skin tone. Even expanded CRI evaluations do not offer reliable criteria.

TLCI (Television Lighting Consistency Index), the new standard of the European Broadcasting Union (EBU), offers a better and more reliable base for the way studio cameras see LED light. These studio cameras usually work with three CCD sensors. Thus, the results are not really indicative for the way different CMOS cameras see LED color. Only practical tests with many different cameras and shooting different skin tones in reference light comparisons bring us closer to the target.

## dedocolor

dedocolor finally offers values and properties which bring us very close to the target, even under critical conditions, and even in most mixed light situations.



CRI Ra (1-8)	97
CRI Ra' (1-14)	96
CCT	3112K

R1	R2	R3	R4	R5	R6	R7	R8
98	98	95	97	96	95	98	96
R9	R10	R11	R12	R13	R14	R15	
89	92	96	95	98	96	89	

Values gained from expanded CRI measurements with our 40W DLED4.1 bicolor light in tungsten function.

## NEW:

### FELLONI2

Our multi-LED panels - the FELLONIs - are now available in FELLONI2 version with distinctly enhanced light output, without increasing power consumption. This leads to a noticeable increase in light efficiency.

Compared to other very well-known multi-LED panel lights, the FELLONI2 has 180 % efficiency.

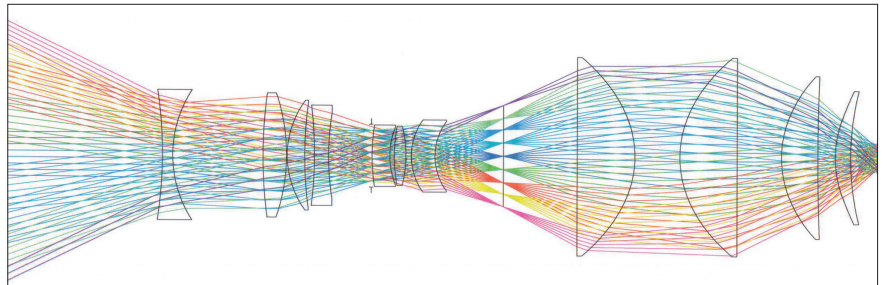
### dedocolor FELLONI

The dedocolor FELLONI are multi-LED panels with the highest color quality (CRI approx. 95). These LED panels will have the high light output and efficiency of the traditional FELLONI's, but with optimum color quality.

This will be a variant at prices about 25% higher than the traditional FELLONI.

Focusing LED lights present special challenges regarding color distribution. Specially developed LED light sources in combination with our patented double-aspheric technology (recognized by the Oscar committee for Technical Achievement) have allowed us to provide five different dedolight DLED focusing LED light fixtures. All deliver perfect light distribution, the widest focusing range in the industry and allow the use of our unique line of light shaping accessories.

- Available in daylight, tungsten and bicolor. Bicolor is variable from 2700K to 6500K
- Passive cooling – no fan, no noise – for all of our focusing LED lights from 8W to 90 W
- Active Cooling with our DLED12.1 (250 W) - probably the most quiet solution.



Ray tracing of DLED9.1 light head with imager / projection attachment and 70mm projection lens f1,5

#### Health hazards

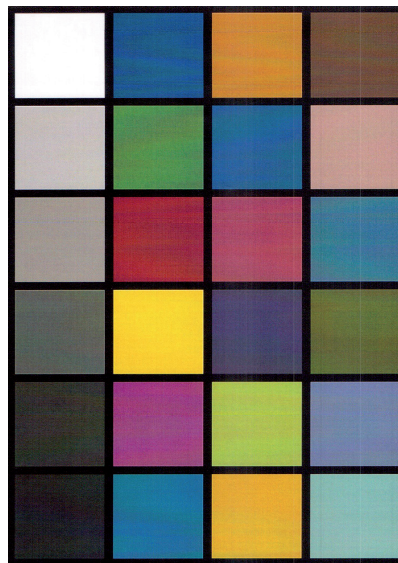
In the past with metal halide lamps the hazard was with the short wave-length ultraviolet, possibly causing skin cancer and cataract.

In this field we have always offered the worldwide lowest and safest uv-value.

With LED light sources an additional hazard can be found, caused by the unavoidable **blue peak**. New criteria have to be applied as in bio-hazard standard EN6247.

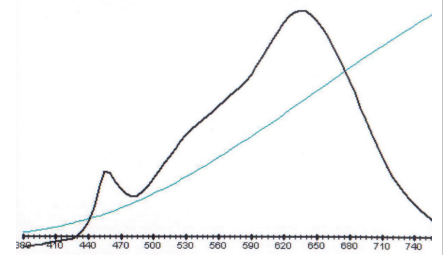
Our products comply with the requirements of bio-hazard standard EN6247 in the category of "exempt" (without any health hazard criteria).

DLED4.1-BI Tungsten 00004: CCT = P2629 (- 0.3)  
TLCI-2012: 97 (P2629)



Television Lighting Consistency Index – 2012

Sector	Lightness	Chroma	Hue
R	0	0	0
R/Y	0	0	0
Y	0	0	0
Y/G	0	0	0
G	0	0	0
G/C	0	0	0
C	0	0	0
C/B	0	0	-
B	0	-	0
B/M	0	0	+
M	0	+	+
M/R	0	0	0



TLCI evaluation of the above mentioned light with TLCI values 97 in bicolor version and its lowest color temperature 2629K.

# DEDO TIMES

[www.dedotimes.com](http://www.dedotimes.com)

Read the latest news, information and stories about your favorite light and camera accessories at DEDO TIMES.

Find current press releases, exclusive interviews, articles and valuable training videos for film video and photo.

DEDO TIMES – Covering personal, technical and creative aspects of modern image culture.

Register for alerts and don't miss anything!



<http://www.youtube.com/user/dedoweigertfilm>

- HOW TO LIGHT - tutorial videos
- DID YOU KNOW - videos about our unique products
- DEDOLIGHT IN PHOTOGRAPHY - photo shootings and interviews made with dedolight
- INTERVIEWS / BEHIND THE SCENES - learn more about how professionals use our products and a lot more...

# INTRODUCING OUR COMPLETE RANGE OF FOCUSING DEDOLIGHT LED FIXTURES

## 5 DIFFERENT SIZES:

They all share common properties.

- State-of-the-art light source with features exclusively developed by dedolight and highest dedocolor® quality
- dedolight patented aspherical optics
- Providing astoundingly high efficiency
- Unprecedented focusing range (wider/tighter)
- dedolight clean beam concept. Controlled precision beam with no stray light outside and perfectly even light distribution within the beam
- DLED2.1 and DLED4.1 provide excellent color in tungsten, daylight and bicolor versions.
- The unique DLED9.1 and DLED12.1 were designed for studio application (daylight and tungsten), but will also work ideally for mobile, scenic production.
- With the exception of the DLED12.1, all our focusing LED fixtures work with effective passive cooling, without fans.
- Complete light-shaping control
  - Precise barn door shadows.
  - Scrim
  - Graduated gray filters
  - Aspherical wide-angle attachments with rotating barn door leaves
- dedolight imager - projection attachments for:
  - Light framing
  - Soft edge light framing with eye filters
  - Gobo projection
  - Background effect projection
  - Slide projection



The DLED4.1 is available as both a mobile and studio version. The studio version also features DMX control.

For mobile work, the bicolor version is continuously tunable from tungsten to daylight and adaptable to various ambient light conditions. Also useful in combination with our bicolor FELLONI panel lights.

The DLED4.1 and DLED9.1 are also available with DMX controls.

The DLED12.1 comes with DMX controls as standard.

Our on-board Ledzilla is our smallest and one of our best selling LED lights.

LED



 dedocolor®



## YOUR DREAM - OUR FOCUSING

Complete Range in 5 different sizes

- \* Patented aspherics<sup>2</sup> dedolight Optics
- \* Unprecedented Focusing
- \* Astounding Light Efficiency



COMPLETE RANGE OF

# LED LIGHTS



## LED LIGHTS

and systems for on-board, off-board, mobile, studio & special effects.

- \* Perfectly Even Light Distribution
- \* Perfect **dedocolor**<sup>®</sup> (Tungsten, Daylight, Bicolor)
- \* Complete Range of Light Shaping Control Tools



# LED PANEL LIGHTS

# DEDOLIGHT® DLED2.1 LED

## SMALL, POWERFUL, VERSATILE



**DLED2.1Y-D / -BI**

separate light head for use with ballasts (ballasts shown page 9)



**DLED2.1-D**

Monocolor. Continuous dimming with no color shift, with integrated electronics an 16 mm (5/8") stand fitting.



**DLED2.1-BI**

Same as image A, but in bicolor version. Continuous dimming with no color shift. Color temperature range 2800K - 6000K. One of the knobs serves for dimming, the other one for continuous change of color temperature.



**DLED2-BS**

Battery shoe for DLED2.1-D/-BI. Accepts NPF950/960/970 batteries (7.2V / 47Wh)

**DLED2-BSU**

Battery shoe for DLED2.1-D/-BI. Accepts Sony BPU-60 battery (14.4 V/56 Wh)

**DLED2.1YHSM-D/-BI**

As depicted above, but with hot shoe mount.

Interchangeable mounting from stand fitting to hot shoe mount. Can be delivered as spare part upon request.

Dedolight Patented Aspheric Optics in combination with specially developed LED light sources in daylight and bicolor variations. For use as on-board or off-board light, multi-functional and versatile as tiny interview and documentary lighting, for accents and special effects. Especially useful and versatile in combination with FELLONI bicolor multi-LED panels.



**DLED2.1HSM-D / -BI**

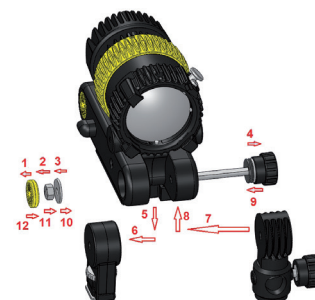
Similar to A, but with hot shoe mount for camera mounting

*Note: This version can be mounted directly on the camera (hot shoe) or with adapter DLA-ML, used on stands with 3/8" stud.*

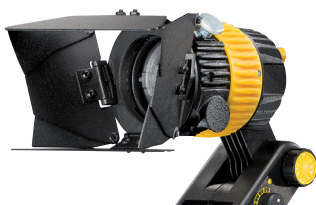


**DLA-ML**

Square top fits Ledzilla®. Accepts 16 mm baby stud (5/8")



Hot shoe mount can be exchanged by the user to stand fitting and vice versa, as shown above.



**DBDS**

Barn door with 8 leaves – rotating

**DBDS8**

Standard 8-leaf barn door for DLED2 light head (April 2014).



**DLED2-SBX incl. DLSR60**

soft box and speedring







#### DP2S

Imager / projection attachment with adjustable blades



#### DP1S

Imager / projection attachment for Gobos and background effect filters



#### DLBCA-V

V-Mount plate with belt clip or belt loop and D-tap output.

*Note:*  
LiTH 95Wh battery with integrated charger and V-Mount adapter can be used on a belt and also hung on the knob of a stand (loop). This device also serves to feed DLED4.1 in all its various versions (see following pages).



#### LiTH 95SI battery, 95 Wh

- V-lock mount
- 14.8V 95Wh
- Max. discharge rate up to 10A
- Input voltage for charger 90V - 240V (Including charge cable. Specify power plug needed for your country.)
- Integrated charger
- Compatible with all V-mount plates
- 5-pin connector allows communication for camera and all other V-lock equipment

### THREE SIZES OF CONNECTING CABLE TO LIGHT HEAD (yoke versions)

#### DLED2POW0.55

Connecting cable to light head, 2' (55 cm) long

#### DLED2POW1.4

Connecting cable to light head, 5' (140 cm) long

#### DLED2POW3

Connecting cable to light head, 10' (300 cm) long

### DC BALLASTS



#### DT2.1-BAT

Dimmable monochrome ballast for DLED2.1Y-D/DLED2.1YHSM-D  
Dimming with no color change.  
Input: 6 - 18 V DC



#### DT2.1-BI-BAT

Dimmable bicolor ballast for DLED2.1Y-BI / DLED2.1YHSM-BI  
Dimming and continuous change of color temperature from 2800 to 6000K.  
Input: 6 - 18 V DC

### INPUT CABLES FOR DC BALLASTS



#### DLOBML-XLR

Coiled cable 25 - 51" (65 cm - 1.30 m) with 4 - Pin XLR connector



#### DLOBML-CAR

Cable 6 ft. (1.8 m) with cigarette light connector



#### DLOBML-AB-S

Cable 9" (22 cm) with Anton / Bauer connector

#### DLOBML-AB-L

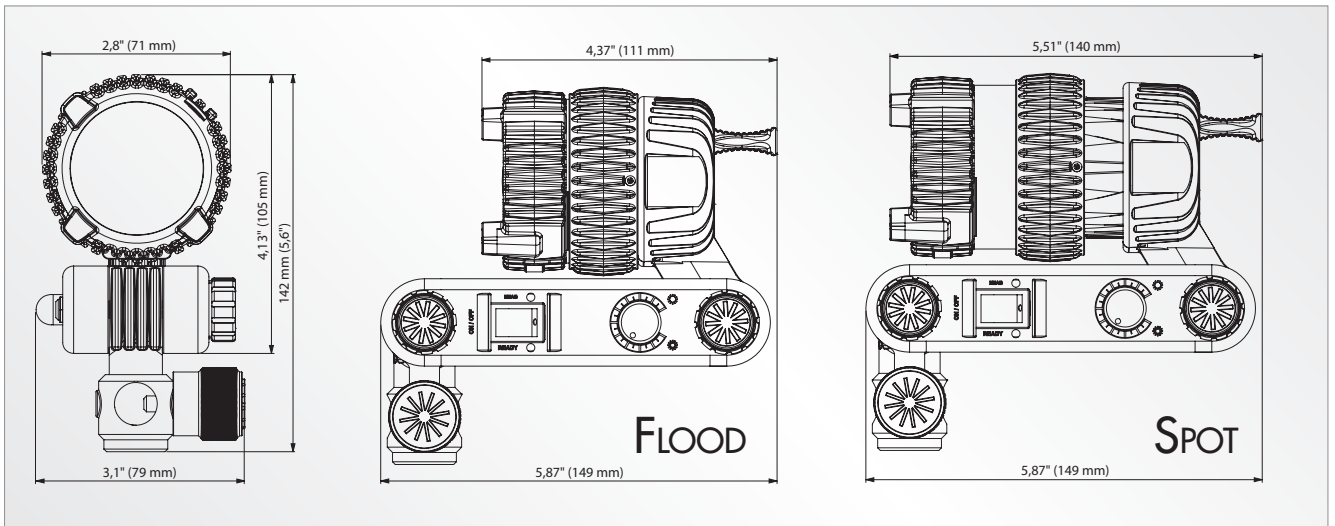
Cable 22" (55 cm) with Anton / Bauer connector

#### DLPS12-30

Mains power unit with connector set EU, USA, AUS, UK

If needed, the power feed between ballast and AC adapter DLPS12-30 can be elongated by extension cable DLPS12-EXT (length 8' / 250 cm)

# DLED2.1 TECHNICAL DATA



## FOCUSING LIGHT HEAD: DLED2.1-D, DLED2.1-BI

Focus Range (Intensity Range)	50° - 5° (1:7)
Focus Control	3/4 turn on focus ring
Power	25 W, 6 - 18 V DC
Mounting	5/8" (16 mm) receptacle and 1 1/8" (28 mm) stud OR: optional with shoe mounting (e.g.: DLED2.1 HSM-BI) OR with yoke and separate power supply (e.g.: DLED2.1Y-BI)
Operating Position	Any, except electronics directly over light head
Tilt Control	Adjustable friction
Accessory Holder*	Ø 2.3" (58 mm)
Safety	Protection Class III, SELV, IP40
Cooling	Passive cooling (no fan)
UV	No UV radiation
Weight	1.8 lb (800 g)
Size	W: 3.1" (79 mm) L (flood) : 5.87" (149 mm) L (spot) : 5.87" (149 mm) H: 5.6" (142 mm)

## PHOTOMETRICS: DLED2.1-D Daylight LED Light Head

Distance	Meter	1	2	3	4	5	10
	Feet	3'	6'	9'	12'	15'	30'
Flood	Lux	810	203	90	50		
	Foot Candle	75	19	8,3	4,6		
Medium	Lux	1800	450	200	113	72	
	Foot Candle	167	42	19	11	6,7	
Spot	Lux	5250	1312	583	328	210	
	Foot Candle	487	122	54	30	20	

## PHOTOMETRICS: DLED2.1-BI Bicolor LED Light Head (daylight)

Distance	Meter	1	2	3	4	5	10
	Feet	3'	6'	9'	12'	15'	30'
Flood	Lux	870	218	97			
	Foot Candle	81	20	9			
Medium	Lux	1440	130	160	90		
	Foot Candle	134	12	15	8		
Spot	Lux	8600	2150	956	538	344	
	Foot Candle	800	200	89	50	32	

Bicolor in tungsten function ~ 25% lower output



\* for mounting the unique range of DLED2.1 front-end accessories

# DEDOLIGHT® DLED4.1 LED LIGHT HEAD

## DEDOLIGHT® ASPHERICS2® OPTICS



Dedo shows Steven Poster, ASC prototype of DLED4.0 light at IBC 2011 in Amsterdam.

State-of-the-art LED dedocolor® sources in daylight, tungsten and bicolor versions.

Separate dimming control adjusts the intensity with no color change. Focuses like a true dedolight from wide 60° to extremely narrow 4° clean beam – no stray light.

Lets you put the light exactly where you want it without causing any extra unwanted shadows.

Works with all dedolight light shaping accessories and aspheric wide angle attachments (85° max. and still controllable focus) including DP1.1, DP2.1 and DP3.1 imagers which are similar to the well known dedolight projection attachments but with new dual condenser optics for higher transmission and perfect light distribution.

mobile daylight version	=	DLED4.1-D
mobile tungsten version	=	DLED4.1-T
mobile bicolor version	=	DLED4.1-BI

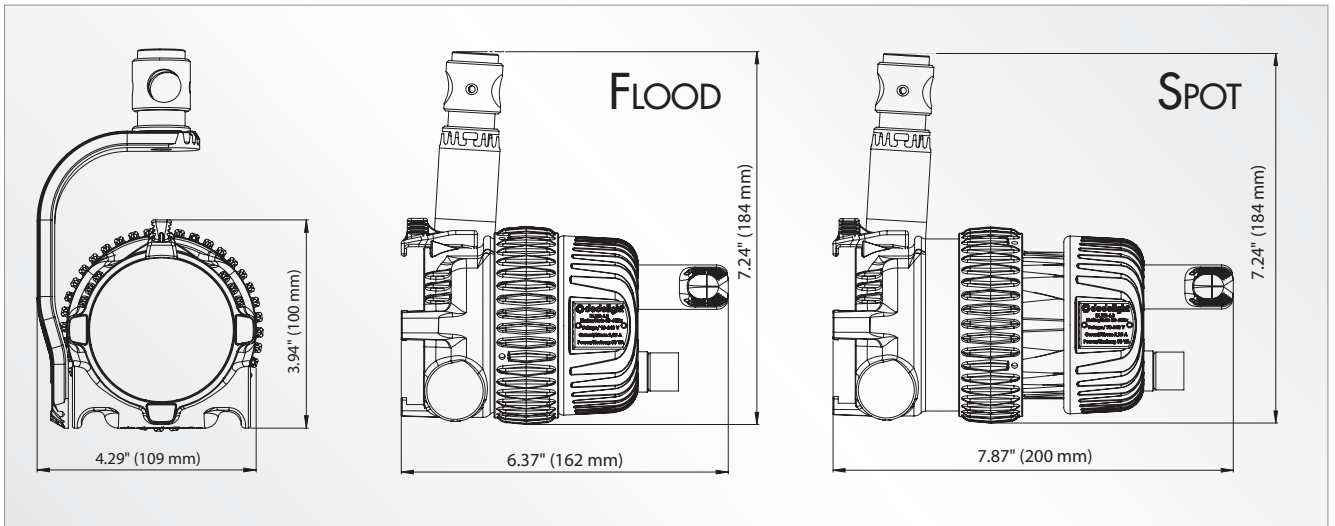
### dedolight DLED4.1SE

Studio version. Same light head as DLED4.1 but with U-shaped yoke and ballast attached to one side of the yoke.

studio daylight version	=	DLED4.1SE-D
studio tungsten version	=	DLED4.1SE-T
studio bicolor version	=	DLED4.1SE-BI



# DLED4.1 TECHNICAL DATA



## FOCUSING LIGHT HEAD: DLED4.1-D, DLED4.1-T, DLED4.1-BI

Focus Range (Intensity Range)	60-4° (1:20) with optional aspheric wide-angle attachment: 85-54°
Focus Control	One complete turn on focus ring
Power	40W
Mounting	5/8" (16 mm) receptacle and 1 1/8" (28 mm) stud
Operating Position	Any
Tilt Control	Permanent friction
Accessory Holder	3" (76 mm) diameter
Safety	Protection Class III, SELV, IP40
Cooling	Passive (no fan)
UV	No UV radiation
Weight	2.9 lb (1,300 g)
Size	W: 4.29" (109 mm) L: (flood): 6.37" (162 mm) L: (spot): 8.87" (200 mm) H: 3.94" (100 mm)

## PHOTOMETRICS: DLED4.1-D Daylight LED Light Head

Distance	Meter	1	2	3	4	5	10
	Feet	3'	6'	9'	12'	15'	30'
Flood	Lux	1500	375	167	94	60	
	Foot Candle	139	35	15	9	5,6	
Medium	Lux	2800	700	310	175	112	
	Foot Candle	260	65	29	16	10,4	
Spot	Lux	36000	9000	4000	2250	1440	270
	Foot Candle	3346	836	371	209	134	25

## PHOTOMETRICS: DLED4.1-T Tungsten LED Light Head

Distance	Meter	1	2	3	4	5	10
	Feet	3'	6'	9'	12'	15'	30'
Flood	Lux	1030	258	114	64	41	
	Foot Candle	96	24	11	6	4	
Medium	Lux	2250	563	250	141	90	
	Foot Candle	563	52	23	13	8,4	
Spot	Lux	18400	4600	2044	1150	736	
	Foot Candle	1710	428	190	107	68	

## PHOTOMETRICS: DLED4.1-BI Bicolor LED Light Head (daylight)

Distance	Meter	1	2	3	4	5	10
	Feet	3'	6'	9'	12'	15'	30'
Flood	Lux	1330	336	148	83		
	Foot Candle	124	31	14	8		
Medium	Lux	2128	532	236	133	85	
	Foot Candle	198	49	30	12	8	
Spot	Lux	10100	2525	1122	631	404	
	Foot Candle	939	235	104	59	38	

Bicolor in tungsten function ~ 25 % lower output

# POWER OPTION FOR DLED4.1

## DEDOLIGHT® DLED4.1 POWER SUPPLY

DT4.1 AC power supply for DLED4.1 tungsten and daylight light heads.

Allows worldwide use from 90 - 264 V AC\* 50/60 cycle plus continuous dimming.

The DT4.1-BI, same as above but with extra control for continuous change of color temperature from daylight to tungsten.

Add suffix "-DMX" for above ballasts with DMX control DT4.1-DMX.

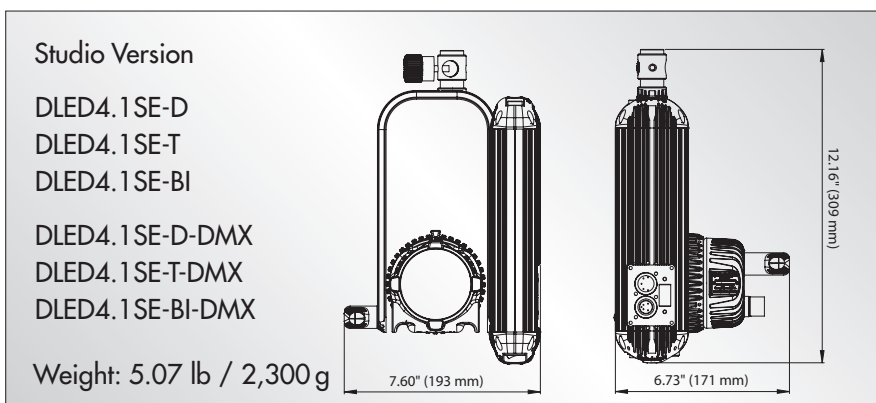
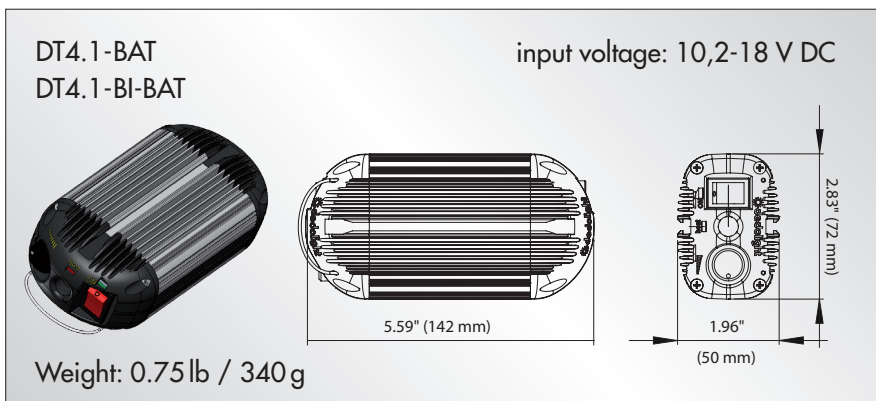
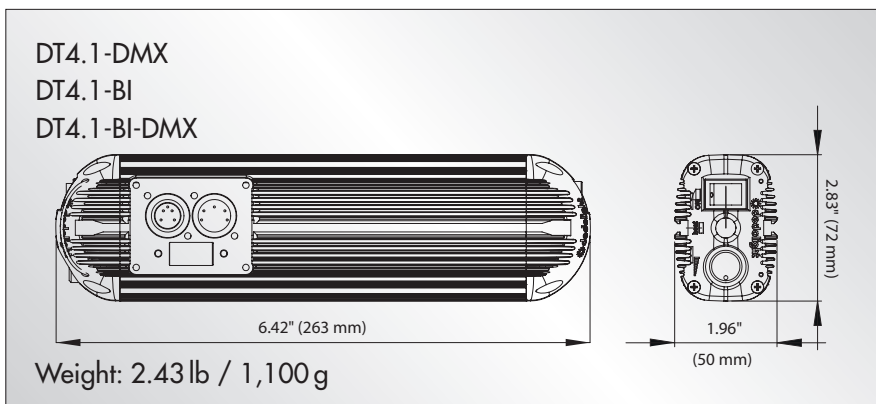
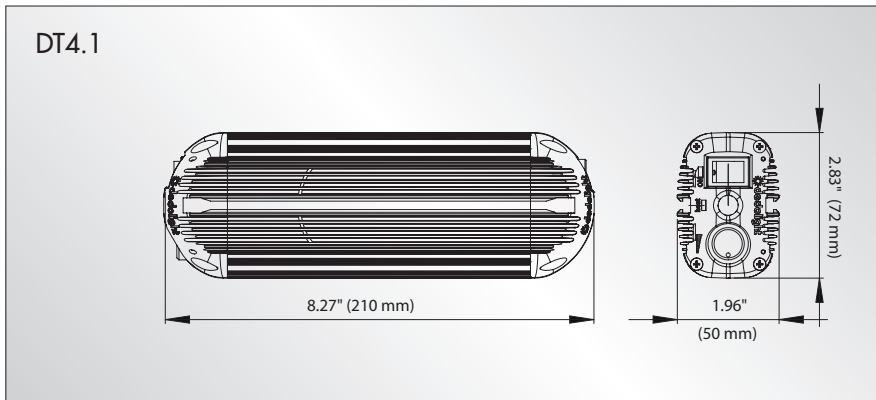
The DT4.1-BAT-XLR / DT4.1-BAT-AB (D-TAP) is much smaller and allows operation from any 10,2-18V source.

The DT4.1-BI-BAT-XLR / DT4.1-BI-BAT-AB (D-TAP), same as above but with extra control for continuous change of color temperature from daylight to tungsten.

### POWER SUPPLY FOR AC OPERATION: DT4.1, DT4.1-BI

Input Voltage	90 - 264 V AC * 50VA / 0,5-0,21 A 47 W
Output Voltage	40V
Controls	ON/OFF switch, dimming knob
Dimming	Continuously from 100-0%
Safety	Protection Class I, IP40
Cable length (plug -> power supply)	Mains cable 8.2' / 2.5 m
Cable length (plug -> light head)	Cable to light head 4.6' / 1.4 m
Mounting	Cable loop
Weight	2.2 lb / 1,000 g
Size	L: 8.3" (210 mm) W: 2.8" (72 mm) H: 2" (50 mm)

\*) functional range including tolerances



# NEW: DLED4/FELLONI KITS

## DLED4 3 LIGHT KIT - BICOLOR WITH SOFT CASE

### SPSLED3-BI-BAT 3 Light Kit - BICOLOR (BAT) - DC, battery operation only

3x DLED4.1-BI bicolor light head with 1x dedoflex mini soft box and accessories. 3x DT4.1-BI-BAT-AB battery power supplies 10,2-18 V DC, 3x LiTH 95SI batteries with integrated charger, 3x DST stands. Complete with DSC1/1-200 soft case

### SPSLED3-BI-B 3 Light Kit - BICOLOR (BASIC) - AC, mains operation only

3x DLED4.1-BI bicolor light head with 1x dedoflex mini soft box and accessories. 3x DT4.1-BI mains power supplies 90-264 V AC (please specify power plugs), 3x DST stands. Complete with DSC1/1-200 soft case

### SPSLED3-BI-S 3 Light Kit - BICOLOR (STANDARD) - AC/DC, mains and battery operation

3x DLED4.1-BI bicolor light head with 1x dedoflex mini soft box and accessories. 3x DT4.1-BI-BAT-AB battery power supplies 10,2-18V DC, 3x LiTH 95SI batteries with integrated charger, 3x DT4.1-BI mains power supplies 90-264V AC (please specify power plugs), 3x DST stands. Complete with DSC2/2-200 soft case

### SPSLED3-BI-M 3 Light Kit - BICOLOR (MASTER) - AC/DC, mains and battery operation

3x DLED4.1-BI bicolor light head with 1x dedoflex mini soft box, DP1.1 imager and accessories. 3x DT4.1-BI-BAT-AB battery power supplies 10,2-18V DC, 3x LiTH 95SI batteries with integrated charger, 3x DT4.1-BI mains power supplies 90-264V AC (please specify power plugs), 3x DST stands. Complete with DSC2/2-200 soft case



SPSLED3-BI-M 3 Light Kit - BICOLOR (MASTER)

## DLED4 3 LIGHT KIT - DAYLIGHT WITH SOFT CASE

### SPSLED3-D-BAT 3 Light Kit - DAYLIGHT (BAT) - DC, für battery operation only

3x DLED4.1-D daylight light head with 1x dedoflex mini soft box and accessories. 3x DT4.1-BAT-AB battery power supplies 10,2-18 V DC, 3x LiTH 95SI batteries with integrated charger, 3x DST stands. Complete with DSC1/1-200 soft case

### SPSLED3-D-B 3 Light Kit - DAYLIGHT (BASIC) - AC, mains operation only

3x DLED4.1-D daylight light head with 1x dedoflex mini soft box and accessories. 3x DT4.1 mains power supplies 90-264V AC (please specify power plugs), 3x DST stands. Complete with DSC1/1-200 soft case

### SPSLED3-D-S 3 Light Kit - DAYLIGHT (STANDARD) - AC/DC, mains and battery operation

3x DLED4.1-D daylight light head with 1x dedoflex mini soft box and accessories. 3x DT4.1-BAT-AB battery power supplies 10,2-18V DC, 3x LiTH 95SI batteries with integrated charger, 3x DT4.1 mains power supplies 90-264V AC (please specify power plugs), 3x DST stands. Complete with DSC2/2-200 soft case

### SPSLED3-D-M 3 Light Kit - DAYLIGHT (MASTER) - AC/DC, mains and battery operation

3x DLED4.1-D daylight light head with 1x dedoflex mini soft box, DP1.1 imager and accessories. 3x DT4.1-BAT-AB battery power supplies 10,2-18V DC, 3x LiTH 95SI batteries with integrated charger, 3x DT4.1 mains power supplies 90-264V AC (please specify power plugs), 3x DST stands. Complete with DSC2/2-200 soft case

## DLED4/FELLONI (2x1) 3 LIGHT KIT - BICOLOR WITH BACK PACK

### BPSLED2x1-BI-BAT 3 Light Kit - BICOLOR (BAT) - DC, battery operation only

2x DLED4.1-BI bicolor light head,  
1x FELLONI BI50HO bicolor LED panel with FELLONI soft box,  
DP1.1 imager and accessories.  
2x DT4.1-BI-BAT-AB battery power supplies 10,2-18 V DC,  
3x LiTH 95SI batteries with integrated charger, 3x DST stands.  
Complete with DBPSLED backpack

### BPSLED2x1-BI-B 3 Light Kit - BICOLOR (BASIC) - AC, mains operation only

2x DLED4.1-BI bicolor light head,  
1x FELLONI BI50HO bicolor LED panel with FELLONI soft box and accessories.  
2x DT4.1-BI mains power supplies 90-264 V AC (please specify power plugs), 3x DST stands.  
Complete with DBPSLED backpack

### BPSLED2x1-BI-S 3 Light Kit - BICOLOR (STANDARD) - AC, mains operation only

2x DLED4.1-BI bicolor light head,  
1x FELLONI BI50HO bicolor LED panel with FELLONI soft box,  
DP1.1 imager and accessories.  
2x DT4.1-BI mains power supplies 90-264 V AC (please specify power plugs), 3x DST stands.  
Complete with DBPSLED backpack

### BPSLED2x1-BI-M 3 Light Kit - BICOLOR (MASTER) - AC/DC, mains and battery operation

2x DLED4.1-BI bicolor light head, 1x FELLONI BI50HO bicolor LED panel with FELLONI soft box and accessories.  
2x DT4.1-BI-BAT-AB battery power supplies 10,2-18V DC,  
3x LiTH 95SI batteries with integrated charger,  
2x DT4.1-BI mains power supplies 90-264V AC (please specify power plugs), 3x DST stands. Complete with DBPSLED backpack



BPSLED2x1-BI-M 3 Light Kit - BICOLOR AC (MASTER)

## DLED4/FELLONI (2x1) 3 LIGHT KIT - DAYLIGHT WITH BACK PACK

### BPSLED2x1-D-BAT 3 Light Kit - DAYLIGHT (BAT) - DC, battery operation only

2x DLED4.1-D daylight light head,  
1x FELLONI D50HO daylight LED panel with FELLONI soft box,  
DP1.1 imager and accessories.  
2x DT4.1-BAT-AB battery power supplies 10,2-18V DC,  
3x LiTH 95SI batteries with integrated charger, 3x DST stands.  
Complete with DBPSLED backpack

### BPSLED2x1-D-B 3 Light Kit - DAYLIGHT (BASIC) - AC, mains operation only

2x DLED4.1-D daylight light head,  
1x FELLONI D50HO daylight LED panel with FELLONI soft box and accessories. 2x DT4.1 mains power supplies 90-264 V AC (please specify power plugs), 3x DST stands.  
Complete with DBPSLED backpack

### BPSLED2x1-D-S 3 Light Kit - DAYLIGHT (STANDARD) - AC, mains operation only

2x DLED4.1-D daylight light head,  
1x FELLONI D50HO daylight LED panel with FELLONI soft box,  
DP1.1 imager and accessories.  
2x DT4.1 mains power supplies 90-264V AC (please specify power plugs), 3x DST stands.  
Complete with DBPSLED backpack

### BPSLED2x1-D-M 3 Light Kit - DAYLIGHT (MASTER) - AC/DC, mains and battery operation

2x DLED4.1-D daylight light head, 1x FELLONI D50HO daylight LED panel with FELLONI soft box and accessories. 2x DT4.1-BAT-AB battery power supplies 10,2-18V DC, 3x LiTH 95SI batteries with integrated charger, 2x DT4.1 mains power supplies 90-264V AC (please specify power plugs), 3x DST stands. Complete with DBPSLED backpack

## DLED4/FELLONI (2x2) 4 LIGHT KIT - BICOLOR WITH SOFT CASE

### SPSLED2x2-BI-BAT 4 Light Kit - BICOLOR (BAT) - DC, battery operation only

2x DLED4.1-BI bicolor light head,  
2x FELLONI BI50HO bicolor LED panel with 2x FELLONI soft box,  
DP1.1 imager and accessories.  
2x DT4.1-BI-BAT-AB battery power supplies 10,2-18V DC,  
4x LiTH 95SI batteries with integrated charger.  
Complete with new soft case DSCLED2x2

### SPSLED2x2-BI-B 4 Light Kit - BICOLOR (BASIC) - AC, mains operation only

2x DLED4.1-BI bicolor light head, 2x FELLONI BI50HO bicolor LED panel with 2x FELLONI soft box, DP1.1 imager and accessories.  
2x DT4.1-BI mains power supplies 90-264V AC (please specify power plugs).  
Complete with new soft case DSCLED2x2

### SPSLED2x2-BI-M 4 Light Kit - BICOLOR (MASTER) - AC/DC, mains and battery operation

2x DLED4.1-BI bicolor light head, 2x FELLONI BI50HO bicolor LED panel with 2x FELLONI soft box, DP1.1 imager and accessories.  
2x DT4.1-BI-BAT-AB battery power supplies 10,2-18V DC,  
4x LiTH 95SI batteries with integrated charger,  
2x DT4.1-BI mains power supplies 90-264V AC (please specify power plugs).  
Complete with new soft case DSCLED2x2



SPSLED2x2-BI-M 4 Light Kit - BICOLOR AC (MASTER)

## DLED4/FELLONI (2x2) 4 LIGHT KIT - DAYLIGHT WITH SOFT CASE

### SPSLED2x2-D-BAT 4 Light Kit - DAYLIGHT (BAT) - DC, battery operation only

2x DLED4.1-D daylight light head,  
2x FELLONI D50HO daylight LED panel with 2x FELLONI soft box,  
DP1.1 imager and accessories.  
2x DT4.1-BAT-AB battery power supplies 10,2-18 V DC,  
4x LiTH 95SI batteries with integrated charger.  
Complete with new soft case DSCLED2x2

### SPSLED2x2-D-B 4 Light Kit - DAYLIGHT (BASIC) - AC, mains operation only

2x DLED4.1-D daylight light head,  
2x FELLONI D50HO daylight LED panel with 2x FELLONI soft box,  
DP1.1 imager and accessories.  
2x DT4.1 mains power supplies 90-264 V AC (please specify power plugs).  
Complete with new soft case DSCLED2x2

### SPSLED2x2-D-M 4 Light Kit - DAYLIGHT (MASTER) - AC/DC, mains and battery operation

2x DLED4.1-D daylight light head, 2x FELLONI D50HO daylight LED panel with 2x FELLONI soft box, DP1.1 imager and accessories.  
2x DT4.1-BAT-AB battery power supplies 10,2-18V DC,  
4x LiTH 95SI batteries with integrated charger,  
2x DT4.1 mains power supplies 90-264 V AC (please specify power plugs). Complete with new soft case DSCLED2x2



**DLED4 4 LIGHT KIT - BICOLOR**  
WITH SOFT CASE

**SPSLED4-BI-B 4 Light Kit - BICOLOR (BASIC) - AC, mains operation only**

4x DLED4.1-BI bicolor light head with 2x dedoflex mini soft box, DP1.1 imager and accessories.  
4x DT4.1-BI mains power supplies 90-264V AC (please specify power plugs), 4x DST stands. Complete with DSC2/2-200 soft case

**SPSLED4-BI-M 4 Light Kit - BICOLOR (MASTER) - AC/DC, mains and battery operation**

4x DLED4.1-BI bicolor light head with 2x dedoflex mini soft box, DP1.1 imager and accessories. 4x DT4.1-BI-BAT-AB battery power supplies 10,2-18V DC, 4x LiTH 95SI batteries with integrated charger, 4x DT4.1-BI mains power supplies 90-264V AC (please specify power plugs), 4x DST stands. Complete with DSCXLW soft case

**DLED4 4 LIGHT KIT - DAYLIGHT**  
WITH SOFT CASE

**SPSLED4-D-B 4 Light Kit - DAYLIGHT (BASIC) - AC, mains operation only**

4x DLED4.1-D daylight light head with 2x dedoflex mini soft box, DP1.1 imager and accessories.  
4x DT4.1 mains power supplies 90-264V AC (please specify power plugs), 4x DST stands.  
Complete with DSC2/2-200 soft case

**SPSLED4-D-M 4 Light Kit - DAYLIGHT (MASTER) - AC/DC, mains and battery operation**

4x DLED4.1-D daylight light head with 2x dedoflex mini soft box, DP1.1 imager and accessories. 4x DT4.1-BAT-AB battery power supplies 10,2-18V DC, 4x LiTH 95SI batteries with integrated charger, 4x DT4.1 mains power supplies 90-264V AC (please specify power plugs), 4x DST stands. Complete with DSCXLW soft case



SPSLED4-BI-B 4 Light Kit -BICOLOR (BASIC)

**SPSLED1-BI 1 LIGHT KIT - BICOLOR**  
WITH SOFT CASE

**SPSLED1-BI 1 Light Kit - BICOLOR - DC, battery operation only**

1x DLED4.1-BI bicolor light head and accessories.  
1x DT4.1-BI-BAT-AB battery power supply 10,2-18V DC, 1x LiTH 95SI battery with integrated charger. Complete with DSCM soft case

**SPSLED1-D 1 LIGHT KIT - DAYLIGHT**  
WITH SOFT CASE

**SPSLED1-D 1 Light Kit - DAYLIGHT - DC, battery operation only**

1x DLED4.1-D daylight light head and accessories.  
1x DT4.1-BAT-AB battery power supply 10,2-18V DC, 1x LiTH 95SI battery with integrated charger. Complete with DSCM soft case



# DLED9.1 DEDOLIGHT<sup>®</sup> ASPHERIC<sup>2</sup><sup>®</sup> OPTICS



The exceptional dedolight DLED9.1 combines the unique dedolight double aspheric optical system with state-of-the-art dedocolor<sup>®</sup> LED light sources. This light head is available in daylight, tungsten and a tunable bicolor version. This light accepts all of the accessories and projection attachment/imagers which are identical to the ones in our Series 400 lighting fixtures (DLH400DT, DLH650 and DLH436).

This light is produced also in a version for mobile use, although we expect that most of these lights will find their application in studio work.

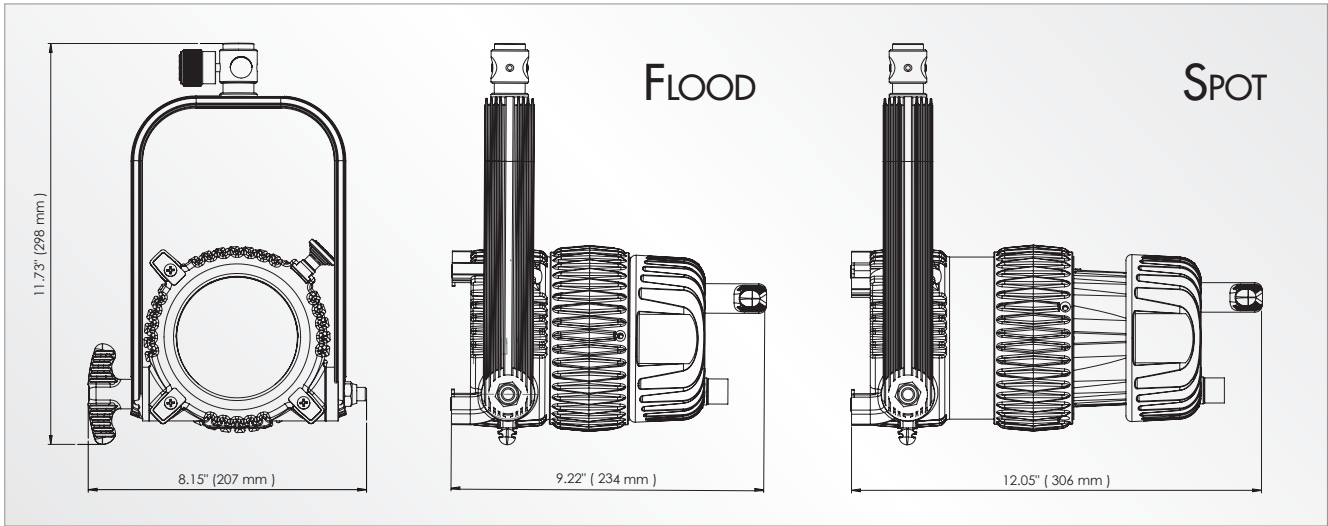
This fixture offers an astounding focusing range, excellent light and color distribution, with perfect color rendering qualities. The power supply for this light works with all voltages from 90 - 264 V AC \*, and it allows continuous dimming without any color change. A DMX version of this ballast is also available.

Since all LED light sources are extremely sensitive to heat, this light fixture includes a thermo-sensor with a signal for shutdown of the ballast, should an overheat situation arise under extreme ambient temperature conditions.

Under normal studio conditions, this light fixture is made for continuous use.

\*) functional range including tolerances

# DLED9.1 TECHNICAL DATA



## FOCUSING LIGHT HEAD: DLED9.1-D, DLED9.1-T

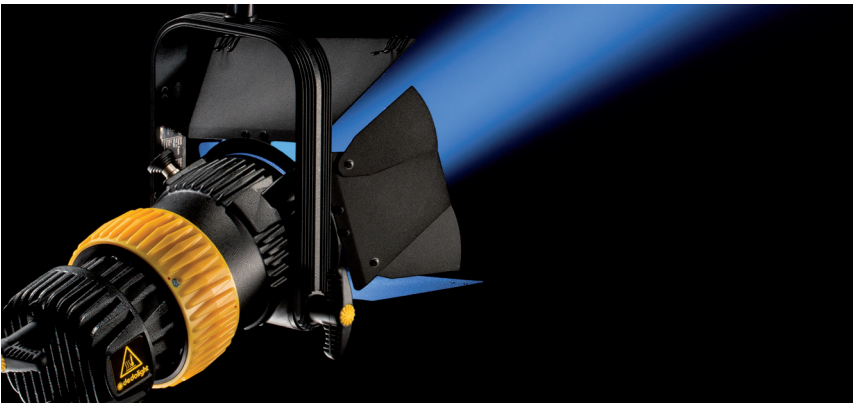
Focus Range (Intensity Range)	50-4° (1:12) with optional aspheric wide-angle attachment: 75°-44°
Focus Control	Two complete turns on focus ring
Power	90W
Mounting	5/8" (16 mm) receptacle and 1 1/8" (28 mm) stud
Operating Position	Any
Tilt Control	Permanent friction
Accessory Holder	Ø 5.1" (129 mm)
Safety	Protection Class III, SELV, IP40
Cooling	Passive cooling (no fan)
UV	No UV radiation
Weight	8.2 lb (3,700 g)
Size	W: 8.15" (207 mm) L (flood): 9.22" (234 mm) L (spot): 12.05" (306 mm) H: 11.73" (298 mm)

## PHOTOMETRICS: DLED9.1-D Daylight LED Light Head

Distance	Meter	1	2	3	4	5	10
	Feet	3'	6'	9'	12'	15'	30'
Flood	Lux	5080	1270	565	318	203	51
	Foot Candle	472	118	53	30	19	5
Medium	Lux	6600	1650	733	413	264	66
	Foot Candle	613	153	68	38	25	5.6
Spot	Lux	60000	15000	6666	3750	2400	600
	Foot Candle	5576	1394	620	349	223	56

## PHOTOMETRICS: DLED9.1-T Tungsten LED Light Head

Distance	Meter	1	2	3	4	5	10
	Feet	3'	6'	9'	12'	15'	30'
Flood	Lux	3860	965	429	241	154	39
	Foot Candle	359	90	40	22	14	4
Medium	Lux	5680	1420	631	355	227	57
	Foot Candle	528	132	59	33	21	5.3
Spot	Lux	40800	10200	4533	2550	1632	408
	Foot Candle	3792	948	421	237	152	38



# POWER OPTION FOR DLED9.1

## DEDOLIGHT® DLED9.1 POWER SUPPLY

DT9.1 AC power supply for DLED9.1 tungsten and daylight light heads.

For bicolor light heads (DLED9.1-BI) a separate power supply is needed (DT9.1-BI).

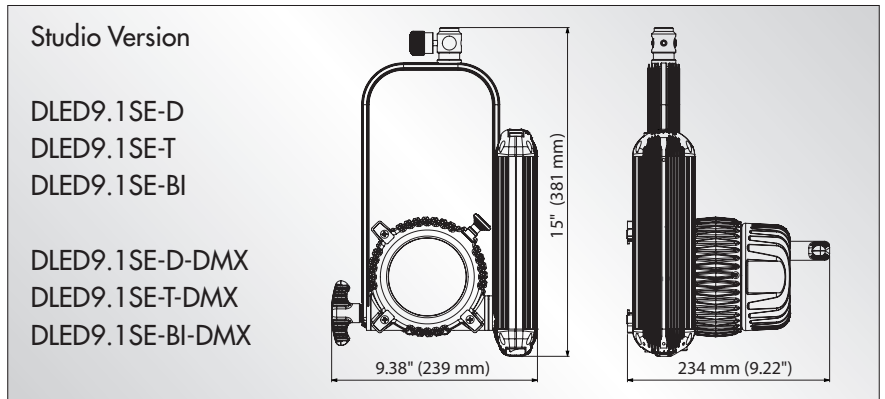
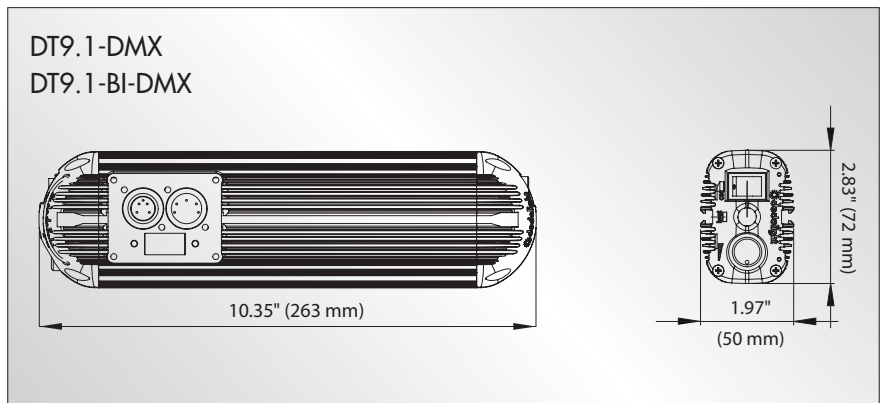
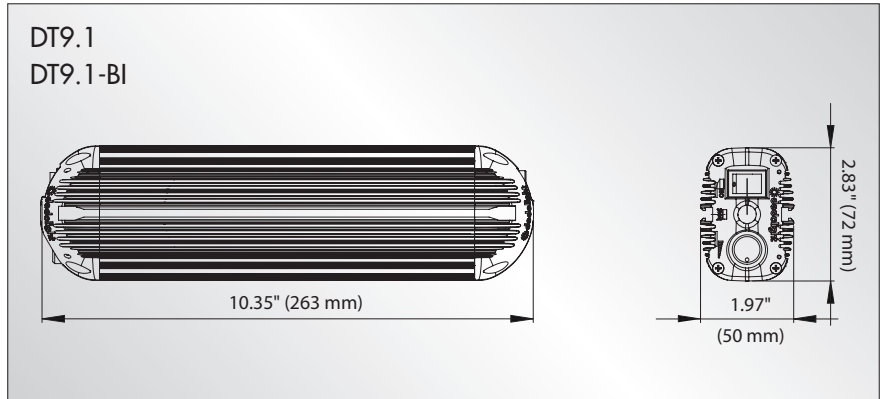
Battery power supplies for DLED9.1-BI will be introduced shortly.

Allows worldwide use from 90 - 264 V AC \* 50/60 cycle plus continuous dimming.

Add suffix "-DMX" for above ballasts with DMX control DT9.1-DMX

### POWER SUPPLY FOR AC OPERATION: DT9.1, DT9.1-BI

Input Voltage	90 - 264 V AC * 100 VA / 1 - 0,4 A 90 W
Output Voltage	40 V
Controls	ON/OFF switch, dimming knob
Dimming	Continuously from 100-0%
Safety	Protection Class I, IP40
Cable length (plug -> power supply)	Mains cable 8.2'/2,5 m
Cable length (plug -> light head)	Cable to light head 4.6'/1,4 m
Mounting	Cable loop
Weight	3.1 lb (1.400 g)
Size	L: 10.35" (263 mm) W: 28" (72 mm) H: 2" (50 mm)



\*) functional range including tolerances

# DLED12.1 DMX STUDIO EDITION

The DLED12.1DMX is currently the largest in our range of focusing LED lights.

All our other DLED lights work with passive cooling – no fan – no noise

The extreme power of this light is compensated by a state of the art cooling system. Noise level of our cooling system is distinctly lower than with other comparable lights.

dedolight aspherics<sup>2</sup> optics provide the expected huge focusing range, clean beam and smooth light distribution.

Both daylight and tungsten versions are available. A bicolor version is still in the test phase.

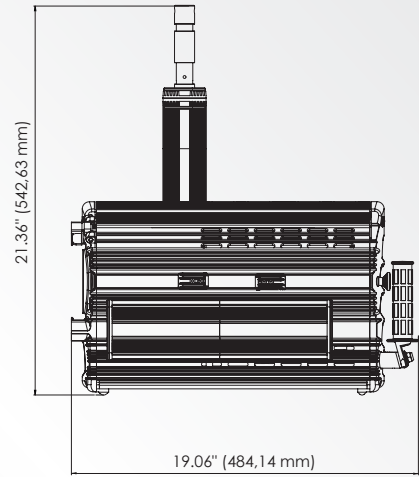
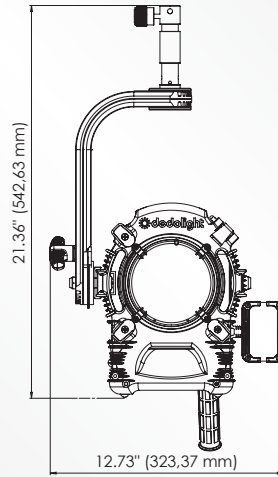


# DLED12.1 DMX DATA

DLED12.1-D-DMX  
DLED12.1-T-DMX

Pole-Operated Versions:

DLED12.1-D-PO-DMX  
DLED12.1-D-PO-DMX



## FOCUSING LIGHT HEAD:

DLED12.1-D-DMX, DLED12.1-T-DMX

Focus Range (Intensity Range)	65-8° (1:6) with optional aspheric wide-angle attachment: 85-54°
Focus Control	Focus control on back
Dimming	Continuously from 100-0%
Power	90-264V AC * 240VA / 2,4-1 A 225 W
Mounting	5/8" (16 mm) receptacle and 1 1/8" (28 mm) stud
Operating Position	+/- 90° (from horizontal)
Tilt Control	Adjustable friction
Accessory Holder	Ø 6.6" (169 mm)
Safety	Protection Class I, IP40
Cooling	Active heat pipe cooling with super quiet fan system
UV	No UV radiation
Weight	11,000 g ( 25 lb)
Size	W: 12.73" (323,5 mm) L: 15.40" (391,2 mm) H: 15" (381 mm)

## PHOTOMETRICS: DLED12.1-D-DMX Daylight LED Light Head

Distance	Meter	1	2	3	4	5	10
	Feet	3'	6'	9'	12'	15'	30'
Flood	Lux	9720	2430	1080	608	389	98
	Foot Candle	903	226	100	57	36	9
Medium	Lux	21384	5346	2376	1337	855	214
	Foot Candle	1987	497	221	124	80	20
Spot	Lux	50400	12600	5600	3150	2016	504
	Foot Candle	4684	1171	520	349	187	47

## PHOTOMETRICS: DLED12.1-T-DMX Tungsten LED Light Head

Distance	Meter	1	2	3	4	5	10
	Feet	3'	6'	9'	12'	15'	30'
Flood	Lux	9090	2273	1010	568	364	91
	Foot Candle	845	211	94	53	34	8,5
Medium	Lux	18180	4545	2020	1136	727	182
	Foot Candle	1690	422	188	106	68	17
Spot	Lux	48600	12150	5400	3039	1944	486
	Foot Candle	4517	1129	502	282	181	45



\*) functional range including tolerances

NEW  
VERSION

**LEDZILLA<sup>2</sup>**

LED ON BOARD-LIGHT

**dedolight**

THE DEDOLIGHT<sup>®</sup> MINI-DLOB



- Smooth light distribution in all and every focusing position.
- Wide-angle flip-up diffuser for 70° angle, smoothly covers wide-angle zooms.
- Clean, sharp, single edge barn door shadow OR a very gentle light and shadow transition with the flip-up diffuser in place
- Converts from daylight to tungsten via flip-down filter
- Color rendition and color distribution is cleaner than comparable LED lights.
- Powers from any 6V to 18V DC power source.
- Optional battery shoes are compatible with Sony, Panasonic, Canon and Nikon mini-DV batteries.
- NPF550 7.2V, 2000 mA, 105 minute run time.
- NPF750 7.2V, 4000 mA, 210 minute run time.
- NPF950 7.2V, 6000 mA, 330 minute run time.

**DLOBML2 Ledzilla2 – On Board - Light**

This light head works with a single, high-power LED

- Amazing output in combination with dedolight double aspheric optics.
- Focuses like a dedolight. LED lights are usually not focusable.
- No other focusing LED light compares - 4° to 56°.
- Power consumption is only 8W despite its high output.
- Operates from -40°C up to +40°C.
- LED power available indicator.
- Front-end bayonet mount allows the addition of attachments and light modifiers.

When dimmed to 50% light output, power consumption drops accordingly resulting in twice the run time. Alternative power from any Anton/Bauer or PAG system, car cigarette lighter output or battery belt.

**PHOTOMETRICS: DLOBML2**

Distance	Meter	1	2	3	4	5	10
	Feet	3'	6'	9'	12'	15'	30'
Flood	Lux	435	109	48			
	Foot Candle	40	10	4,5			
Medium	Lux	957	239	106	60		
	Foot Candle	89	22	9,9	5,6		
Spot	Lux	5400	1350	600	338	216	54
	Foot Candle	502	126	56	31	20	5

**NEW:**

A bicolor version of the Ledzilla will be introduced shortly. Tuneable color from 2700 - 6000 Kelvin.

The Ledzilla Bicolor will accept a rotating 8 leaf barn door (same as featured by the DLED2.1 light heads).

All other Ledzilla accessories are also compatible.

**Options:**

**Soft-Tube, Softbox, White Dome**

Attach by front end bayonet mount



**DLOBML-LT20**

Soft tube, 8"/20cm long – Ideal for soft light in confined areas, e.g., car interior at night. Detachable light shaper – folding plastic barn doors.



**DLOBML-SBX12**

Soft box, 5"/12 cm wide – Gentle fill light, easy to look at, ideal for close ups. Filter slot accepts tungsten conversion filter.

**DLOBML-SBX12-CTO**

Interchangeable front diffuser with color conversion to 3200K (not shown)



**DLOBML-WD15**

White dome (china lantern) soft box, 5.9"/15x15 cm gentle light, evenly distributed, perfect as general fill light. Side covers can be opened individually.

**DLOBML-TCF**

Tungsten conversion filter for filter slot of all three accessories. Same filter slot serves for gel strips from any common swatch book. Allows nearly any kind of color effect.

# ACCESSORIES – MOUNTING (FOR LEDZILLA®, IREDZILLA, FLUORESZILLA)



## DLGA300 / DLGA200

Articulating arm, 200 mm. Square top, male shoe or 1/4" male to camera



## DLBRS

Rail with 1/4" screw for camera and shoe for light head



## DLBRHS

Rail with folding handle, 1/4" screw for light head



## DV3GA

Ø 7.5 cm / 3" vacuum mount with 200 mm articulating arm



## DLBSA-HAND

Shoe adapter with handle



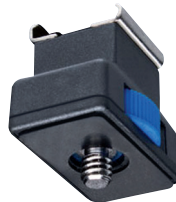
## DLBSA-TS

Table shoe: 9.5 x 6.3 x 1.2 cm (3.7" x 2.5" x 0.5"), with shoe for light



## DLBSA-3S

Triple shoe with tilt lock



## DLBSA-S

Female shoe adapter to 1/4" male



## DLBSA-T

Female shoe adapter to 1/4" female



## DLBSA-M

1/4" male to mini shoe for Sony mini camcorder, use with DLBSA-T



## DLBSA-U

Square top fits Ledzilla®, ends in male shoe



## DLA-LB

Large Bone, 2 x female shoes and 3 x 1/4" receptacles. Mounts to camera with 1/4" screw



## DLBSA-MBJ

Metal ball joint with shoe



## DLA-ML

Square top fits Ledzilla®. Accepts 16 mm baby stud (5/8")



# POWER SUPPLY (FOR LEDZILLA®, IREDZILLA, FLUORESZILLA)



## DLOBML-XLR

Coiled cable 65 cm - 1.30 m / 25 - 51" with 4-Pin XLR connector



## DLOBML-SWIT

Cable 55 cm / 22" with Ø 2.1 / 5.5 mm connector for Swit battery



## DLOBML-PAG

Cable 55 cm / 22" with Ø 2.1 / 5.5 mm connector for PAG battery



## DLOBML-CAR

Cable 1.8 m (6 ft.) with cigarette light connector



## DLOBML-P

Soft pouch for Ledzilla®



## DLB-NPF550

7.2V Li-Ion battery 14.8Wh (2000 mAh)



## DLB-NPF950

7.2V Li-Ion battery 43.2Wh (6000 mAh)



## DLCH-NPF

Charger for NPF battery. Input: 100-240V



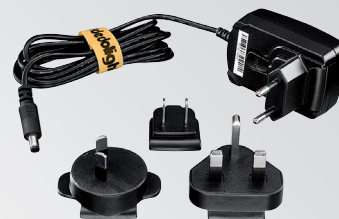
## DLOBML-AB-S

Cable 22 cm / 9" with Anton/Bauer connector



## DLOBML-AB-L

Cable 55 cm / 22" with Anton/Bauer connector



## DLPS-12

Mains power supply (100-240V) with 12V DC output

## DLOBML-BC

7.2V Canon battery shoe for BP-9

## DLOBML-BC2

7,2V Canon battery shoe for BP 808/809/819

## DLOBML-BP

7.2V Panasonic battery shoe for CGA

## DLOBML-BP2

7,2V Panasonic battery shoe for VW-VBG6 (AG-AF101)

## DLOBML-BP3

7,2V Panasonic battery shoe for VW-VBG 070 / 130 / 260 & CGA-DU 07/14/21

## DLOBML-BSU

12V Sony battery shoe for BP-U

## DLOBML-BS

7.2V Sony battery shoe for NP-F / Panasonic VW-VBD1

## DLOBML-PBN1

7,2V Nikon photo battery shoe for EN-EL3E

## DLOBML-PBN2

7,2V Nikon photo battery shoe for EN-EL15

## DLOBML-PBC1

Canon photo battery shoe for LP-E6



## DLBF-8AA

External battery box for 8 AA batteries 1.5V

## 860/960 NM INFRARED LED ON-BOARD-LIGHT HEAD

# LEDZILLA



### DLOBML-IR860

works with cameras incl. night-shot function: for example Somikon DV-883IR, Sony HDR-XR550/HDR-CX730E, Canon XA10/XA20/XA25

### DLOBML-IR960

Works with special night-vision surveillance cameras.

- Worlds first focusing near infrared illuminator that focuses like a dedolight.
- With focusing range of 4° to 56°.
- Even light distribution in all focusing positions.
- Dimmable down to 5 %.
- Illumination up to 40 m (130 ft) (tested with Sony Nightshot Camcorder)
- Powers from any 6V to 18V DC power source.
- Power consumption is only 6W
- Operates from -40°C up to +40°C.
- Various power cables and mounting accessories are available (see Ledzilla® accessory list).
- Works with most night vision equipment
- Amazing 2000 mW illumination power.

- Optional battery shoe for Sony, 7.2V Li-Ion battery:
  - NPF550 7.2V, 2000 mA, 105 minute run time.
  - NPF750 7.2V, 4000 mA, 210 minute run time.
  - NPF950 7.2V, 6000 mA, 330 minute run time.
- Optional battery shoe for Panasonic, Canon und Nikon 7,2V Li-Ion Akkus
- Alternative powe cable available: Anton/Bauer or PAG system, car cigarette lighter output or battery belt.



- The light projected from an 860 nm infrared LED is invisible to the human eye, however you may see a dull red glow when looking directly at the front lens. Also available in a 960 nm version (completely invisible for special IR-Sensor)

When dimmed to 50% light output, power consumption drops accordingly, resulting in twice the run time.

- **Applications:**
  - Infrared Illumination for cameras (night shot)
  - Infrared photography
  - Surveillance systems
  - Machine vision systems
  - Wildlife observation

# FLUORES-ZILLA

- Amazing light output with dedolight double aspheric optics
- Worldwide first black light source that focuses like a dedolight from 4° to 56°
- No heat emission in exiting rays
- No other focusing long-wave 400 nm UV-A LED light source has comparable focus range
- 3000 mW output
- Perfectly even light distribution in each focus position
- Dimmable down to 5 %
- Multiple power supply and attachment accessories are available (see Ledzilla® accessory list)
- Also available with 365 nm, 1500 mW output



### DLOBML-UV

- **Fields of application:**
  - Black light effect / UV-active body paint
  - UV-active deco material/magic ink / Edding UV-marker
  - Fluorescent wall paint (paintings)
  - Bank note – document testing
  - Mineralogy

## DLED4.1 SPECIAL – INFRARED AND UV

Special infrared or UV versions of DLED4.1. Similar functions to the Ledzilla IR and UV lights but with 3 times the output power

### DLED4.1-IR860



### DLED4.1-UV400



# WILL OUR NEW RANGE OF LED LIGHTS MAKE OUR PREVIOUS LIGHTS OBSOLETE ?

## Our focusing DLED lights

Our DLED focusing LED-Lights combine recalculated versions of our unique optical concepts with state of the art LED technology co-developed with us.

These lights offer all unique criteria as previous dedolights. Performance, Precision and Control.

For highest demands as well as for the smaller teams working under street fighters conditions.



## dedolight DLED focusing LED lights

The dedolight DLED focusing LED lights represent breakthrough technology in all aspects.

- Our patented aspheric<sup>2</sup> optical concepts have twice been recognized by the Academy of Motion Picture Arts and Sciences and the Academy of Television Arts and Sciences
- We have recalculated our optics to match each of the new LED sources for optimum performance.
- Many years have been spent co-developing light sources with several of the best LED manufacturers. These special LED arrays have properties that match our optical system.
- We have now reached a color rendition which brings us to the very top in all quality criteria.
- Are regularly tested with various CMOS cameras from different manufacturers that can sometimes show some incongruent results with LED lights.
- Tested in spectrum analysis (CRI)
- Tested with expanded CRI evaluation
- Evaluated according to TLCI – a new color test system for LEDs, based on the response of digital studio cameras. This system has officially been adopted by the EBU (European Broadcaster's Union)
- dedolight has achieved color rendition that brings us to the very top of quality criteria – the results are called "dedocolor<sup>®</sup>".

## Our Multi - LED - Panel Lights: TECPRO FELLONI

Based on the same stringent quality criteria.

### FELLONI2

The latest generation FELLONI 2 offers excellent color and at the same time unparalleled efficiency. High efficiency means less power draw, more light output, better color with double the run time from the same battery.

### FELLONI dedocolor<sup>®</sup>

Same concept, same advantages, but in the ultimate deluxe edition regarding color rendition. One step closer to absolute perfection. If you need the ultimate, then FELLONI dedocolor<sup>®</sup> is one of the most attractive tools.

*(the FELLONI's are described in a separate brochure)*



# CLASSIC DEDOLIGHT – FOCUSING AND SOFT LIGHTS

## Low voltage systems

The special light sources dedolight's use produce 40 lumen per watt whilst studio halogen lamps produce only 20 lumen per watt.

A traditional halogen Fresnel provides only 6% efficiency in its spot position. dedolight's have 3 times as much by virtue of the optics. Our low voltage light sources cost only 25% in comparison to high voltage halogen lamps of the same output. Additionally, low voltage lamps are not easily destroyed by shock or vibration, which makes them "travel-proof" and thus increases their life.

These 150 watt lights produce an output comparable to a 500 watt traditional Fresnel, but with a much higher focusing range. They also offer perfect light distribution, clean beam and unprecedented control accessories. dedolight's have become the lights of choice for the highest precision in lighting control on blockbuster films and smaller teams working under street fighter conditions.

## Focusing dedolights with metal halide light sources

- Another step in our award-winning optics
- Zoom focus
- Double aspherical optics
- Unprecedented control, quality and character
- Unique imaging

## PanAura® Soft Lights

- True "wrap-around" light character
- No hot spot
- Light efficiency more than double in comparison to soft boxes in front of regular studio lights
- Less space, less weight, truly deserving the attribute "portable window"

## The Portable Studio Concept

- Lighter
- Most compact
- More versatile
- Indestructible
- The most economical lighting system available



**NEW** Soft case with wheels for Portable Studio



The DSC2/2-200W can be replaced on the following kits:

- S2 - Traveler Kits
- S3 - Hustler Kits
- S4 - Explorer Kits
- S200-3 - Sundance Kit
- SPS4 - The 4-Light-Kit
- SPS5 - The 5-Light-Kit
- SPHOTO1 - Photographer Kit
- SPHOTO2 - Wedding/Reporter Kit

**DSC2/2-200 W**

Robust soft case.  
Same as DSC2/2-200 but with wheels

## Imaging accessories

Optical design matching the optics of our focusing lights  
Unprecedented light and shadow control.

dedolight super high transmission lenses:

- Highest resolution
- Perfect contrast
- No color fringing
- No halation
- No curvature of field
- None of the "seven sins" of imaging

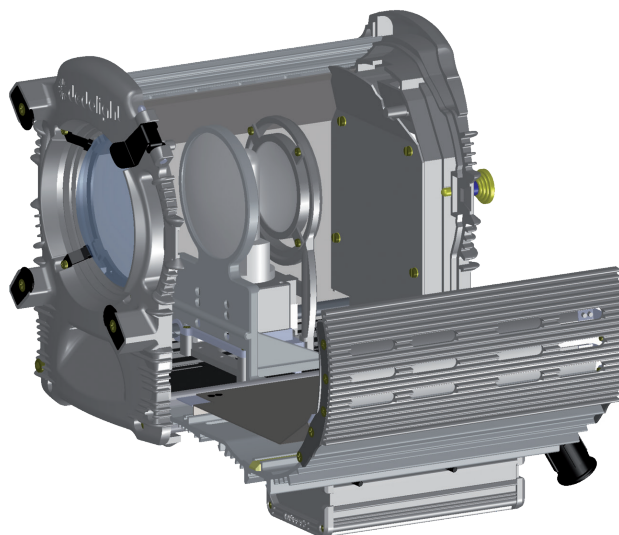


# THE NEW 1200 W DAYLIGHT-SYSTEM

Many years of experience culminate in this new concept. Double aspheric optics and zoom focus.

These concepts are patented and have been twice recognized by the Oscar Committee of The Academy of Motion Picture Arts and Sciences.

- Higher light yield
- Higher focusability
- Perfect light and color distribution
- Highly efficient convection cooling
- Rainproof
- Super service friendly
- Flips open like a book – easy access
- Extremely low UV values, approx. 1/20 of the value shown by other lights



## Technical Data:

### DLH1200D Daylight Light Head

**Focus Intensity 1:18**  
with aspheric wide-angle attachment: 1:50

**Weight:**  
10,5 kg / 23 lb

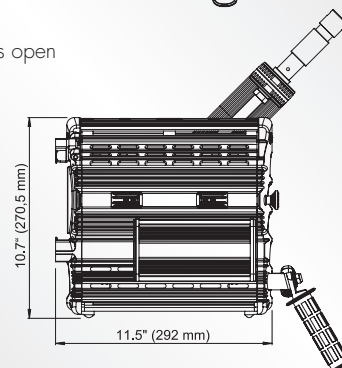
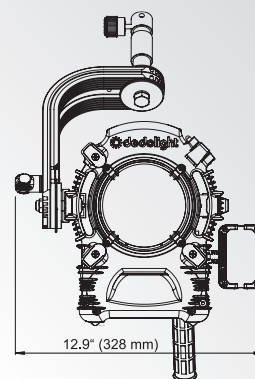
**Lamp:**  
DL1200DHR, 1200W,  
single ended hot restrike, G22.

**Mounting:**  
16 mm (5/8") receptacle and 28 mm (1 1/8") stud

**Safety:**  
Safety switch prevents operation when access door is open

**UV:**  
Extremely low UV emission

**ON / OFF:**  
On / Off buttons located on both, head and ballast,  
for ease of operation



### Hard Case DCHD1200

**Size:** 71 x 37 x 43 cm (2,3' x 1,2' x 1,4')  
**Weight:** 14,5 kg / 32 lbs



# DEB 1200D THE ELECTRONIC BALLAST



DEB1200D Electronic Ballast

## DPOW1200D Cable

- Leading edge technology
- Low heat dissipation
- Silent ventilator remains off during normal operation and operates under high heat conditions only
- Active power factor correction (PFC)
- Funktional range from 90-264 V AC
- Overload protection
- Surge protection
- Short circuit protection
- Auto start function
- DMX control is standard
- Rainproof construction
- The ballast can be opened within 30 seconds – like a book
- Full access to all elements and electronics

## Technical Data:

### DEB1200D Electronic Ballast

**Weight:**  
11,4 kg / 25 lbs

**Output Power:**  
1200 W

**Input Voltage:**  
90-264 V AC \*

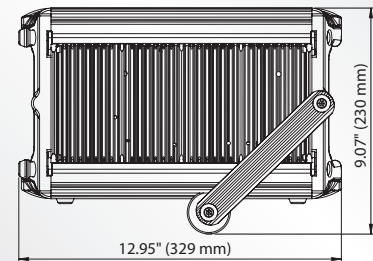
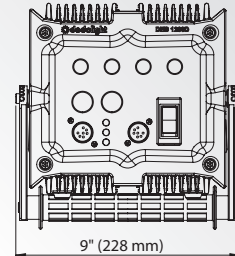
**Indicators:**  
3 Status-LEDs (Ready, Lamp, Heat)

**Dimming Range:**  
50-100 %

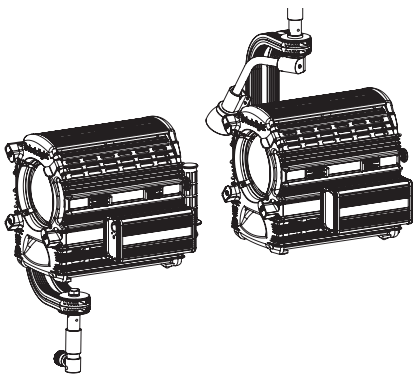
DMX-Control and Auto Start Mode  
"Silent Mode Function" switchable

Stand mounting optional:  
with clamp

*\*) functional range including tolerances*



# THE TUNGSTEN-EDITION OF THE NEW SERIES 1200

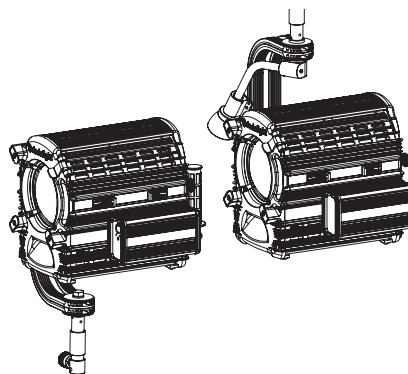


DLH1000T

A mains operated light with unrivaled focusing range and superior light quality. Can be used with a choice of G22 halogen lamps available in 1 kW, 750W, 650W and 500W from 120-240V.

DLH1000TPO

Pole operated Versions for studio applications

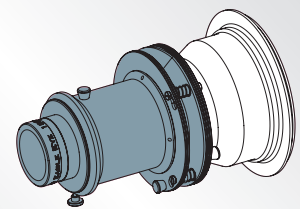


DLH1000T-DMX

DLH1000TPO-DMX

with DMX controlled integrated dimming

## Imager from Series 400 onto 1200



DP1200CON

Condenser back-end module to adapt all imager modules from Series 400 onto Series 1200.

For use with 150 mm, 185 mm and 230 mm projection lenses.

For special wide-angle lenses 70 mm and 100 mm ask for DP1200CON-WA with special versions of framing shutter and universal modules.



# THE PORTABLE WINDOW

## A DEDICATED SOFT LIGHT SYSTEM

### Why do we call it dedicated?

Similar to the other known seven dedolight soft lights, these have been conceived exclusively as optimum soft light sources

- Light output is double in comparison to a soft box in front of a studio Fresnel light, because the actual light sources are placed in the focal point of the reflector
- Gentle wrap around character

On an optimum soft light source, the light emission on the large diffuser should be perfectly even to the edge. It should even be somewhat more intense towards the edge.

Both variations are offered by this soft light by changing the standard inner diffuser with a rim-aura diffuser (both types included).

- The standard inner diffuser provides perfectly smooth light distribution



The inner Rim-Aura diffuser provides a brighter rim area (Aura) on the front diffuser and is closer to the idea of a "wrap around light"



Alternatively, use the large inner diffuser for all over even light



PanAura® 7 with 40° grid

### Tungsten / Daylight

dedolight is probably the only one who offers the interchangeability of daylight discharge lamps with tungsten discharge lamps. Both have equally high light output, identical high color quality and both work with the same ballast.



**DL400DHR-NB**

Metal Halide Lamp 400/575 W Daylight

**DL575THR-NB**

Metal Halide Lamp 400/575 W Tungsten

### Intensity control in six steps with no change of color.

This two lamp system offers a wide range of intensity control. Each lamp is individually controlled and can be switched from 575 W to 400 W or continuously dimmed to 300 W and then switched off. This results in an unprecedented range of intensity control without any change to color quality.

### Higher Output – More Light Less Consumption – Less Heat



**DLHPA7x2DT**

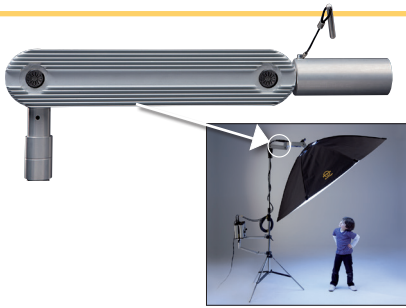
Soft light head for 2 lamps, daylight or tungsten, interchangeable, same high light output. Both lamps work with the same ballasts.

How do you want to call it?  
Energy Efficient?  
Green-Tec?  
dedolight PanAura®?  
The Portable Window?  
... or just the soft light with the most loving character?

Even though we do not favor the hot spot philosophy, we still have 140 percent light level in the center compared to a 5000 W tungsten Fresnel with a soft box and use only 1150 W.

250 percent light level towards the rim compared to a 5000 W tungsten Fresnel with a soft box – and we still only use 1150 W.

PanAura® compares favorably with a soft box on a 2.5 kW daylight studio light – more light and uses only 1150 W.



### DLHPA7-EXT

**Yoke Extension**  
For use with PanAura® 7 in tilted position for extra distance between light stand and PanAura® 7.

### DLPA7\*

dedolight PanAura® 7 soft box with additional rear cowling and 2 different inner diffusers (DLPA7D2 standard diffuser and DLPA7D3 rim aura diffuser) as well as the DLPA7D1 large front diffuser.

### DLPA7x4T\*

dedolight PanAura® 7 Special version soft box with super high heat resistant material and additional air vents for use with DLHPA7x4T (4 x 1000W).

\* When using the PanAura® 7 with DLHPA7x2T and DLHPA7x4T heads and PanAura® 5 with DLH1000SPPLUS head with halogen lamps in a straight downward position (for extended period of time), please order extra "heat shield inserts".



For PanAura® 5:

### DLPA5-HTS4

Set with 4 heat shields



For PanAura® 7:

### DLPA7-HTS3

Set with 3 heat shields

### DLPA5-HTS8

Set with 8 heat shields

### DLPA7-HTS8

Set with 8 heat shields

### DEB400DT

Electronic flicker free ballast for daylight and tungsten discharge lamps.



### DPOW400DT

Connection cable between Light Head and Power Supply



### DEB400Hx2

Extending ballast holder for better balance

### DLPA7G



40° grid for all PanAura® 7 Models



### DSCPA7W

PanAura® 7 soft case with wheels

### SPA7x2DT

Tungsten/Daylight PanAura® Kit

- robust soft case with wheels
- soft light head
- 2 x 400/575 W daylight lamps
- soft box with rods and baffle
- 2 types of inner diffusers
- 1 front diffuser
- 40° grid
- 2 ballasts, cable



optional:

- yoke extension
- variable ballast holder
- stands
- 575W tungsten lamps (available soon)

## Pure Tungsten Variations of PanAura® 7

When you don't need daylight and the flexibility to change between daylight and tungsten (interchangeable lamps), you may want a pure halogen tungsten light source.

Tungsten PanAura® light head DLHPA7x2T works with two 1000W halogen lamps.

The DLHPA7x4T works with four 1000 W lamps (type DL1000FEP-NB / FEL-NB). The 4K version (4 lamps) requires a special soft box which can withstand the extra heat and provides extra air vents (DLPA7x4T).

All halogen lamps are individually switchable or can be dimmed individually with our new dimmers - see page 28.



### DLHPA7x2T Tungsten 2 x 1000 W

Soft Light Head for 2 Lamps 1000W Halogen with protective glass tubes



### DLHPA7x4T Tungsten 4 x 1000 W

Soft Light Head for 4 Lamps up to 1000W Tungsten each, with protective glass tubes

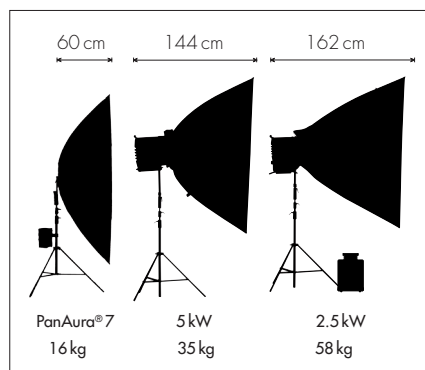


## Size, Depth, Weight

The PanAura® family comes in 3 sizes, all offer superb soft light character without any hot spot, and the choice of different inner diffusers allows smooth and even light distribution or the typical PanAura® look with the brighter rim towards the outside - the true loving, caressing wrap-around light character.

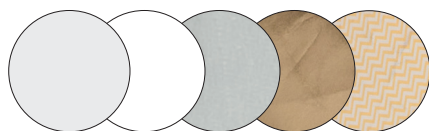
When working in confined areas the depth of the light head can make the decisive difference whether this wonderful, creative tool can be used at all. The very shallow depth of this portable window system offers distinct advantages in space consumption.

Also much less weight, higher light efficiency, lower heat, lower power consumption (never blow a household fuse).



## dedoflex MULTIDISC 5 IN 1

The MultiDisc 5 in 1 offers five reflector surfaces. Translucent, white, silver, gold, and soft gold in one easy to carry package. Switch surfaces in seconds.



- Translucent: Use to diffuse light. Produces a broad light source and soft effect.
- White: Use to reflect light with natural looking results.
- Silver: Use to increase specular highlights adding more contrast to your image.
- Gold: Use for a strong warming effect in your lighting
- Soft Gold: Use for natural looking, warmer reflected light. Soft Gold combines silver and gold in a zig-zag pattern for a warm, summery feel that works great with skin tones.

The heavy duty steel frame is guaranteed not to break for the life of the product. Reflector surfaces are smooth and flat for consistent, even reflections. The MultiDisc comes in its own protective, durable fabric case for storage and transport.



### DF5IN1-56

Small 56 cm (22")

### DF5IN1-81

Medium 81 cm (32")

### DF5IN1-106

Large 106 cm (42")



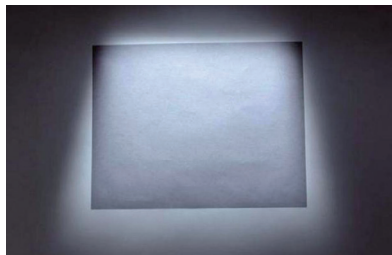
### DLCH Compact Disc Holder

The new compact holder for dedoflex reflectors and diffusers as well as for dedoflex 5 in 1 MultiDiscs. The holder consists of two parts and can be expanded from 71 cm/28" to a maximum of 127 cm/50". A 16 mm stud is provided for mounting accessories or light heads.

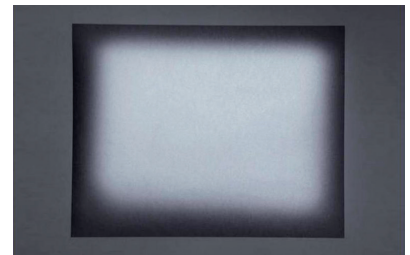
# WIDE EYE - NEW WIDE ANGLE OPTIONS

ENABLES FOCUS RANGE LIKE NO OTHER LIGHT.

WHEN LIGHT IS POINTED DOWNWARD – EVEN FROM AN ANGLE – ROTATING BARN DOOR LEAVES GIVE PARALLEL SHADOWS, FOR THE FIRST TIME IN LIGHTING HISTORY



Your Rembrandt, lit with a traditional 8-leaf barn door (Many barn doors only have 4 leaves)



Our system turns the 'unavoidable' trapezoidal shadow edges into parallel shadows.

## DLWA

Wide-angle attachment for classic dedolight

## DLWAR

Wide-angle attachment with rotating barn door leaves for classic dedolight

## DLWA400R

Wide-angle attachment with rotating barn door leaves for series 400 lights

## DLWA1200R

Wide-angle attachment with rotating barn door leaves for series 1200 lights

dedolights can focus like no other conventional light source. This is made possible by our patented dedolight concept with two aspherical lenses and triple zoom focus movement.

Small studio lights focus in a ratio of 1:3. Some large studio Fresnels reach 1:6. dedolights have a focusing range up to 1:25. These figures refer to changes of intensity when focusing from flood to spot.

dedolight changes the angle of exit from approx. 60° down to 4°. Such are values which are never reachable by other comparable lights.

New - another added exclusive feature: A whole series of aspheric optical, wide-angle attachments called Wide Eye. By adding these attachments the focusing range of dedolights is enhanced up to a ratio of 1:55 and changes the angle of exit from 4° all the way to 90°.

For video cameras, such attachments were known to turn a standard zoom into a wide-angle zoom. This is another dedolight lighting exclusive.

Wide Eye is available in three different sizes:

- for Classic dedolight, 200W Sundance and DLED4.1
- for Series 400 and DLED9.1
- for Series 1200 and DLED12.1

## Why do we need rotating barn door leaves?

All traditional barn door leaves can only be adjusted parallel to each other.

Isn't that amazing...practically most lighting situations work from an angle (usually from above) in which case the shadow edges of traditional barn door leaves will no longer show as parallel, but as a trapezoidal shape.

That is not the way our houses, rooms, doors and pictures are built. When rotating the barn door leaves of the dedolight (special barn doors like DBD2 and the barn door leaves on the wide-angle attachments) it enables you for the first time to light vertical and rectangular edges of objects with precision.

- widen angle of exit up to 85° or 90°
- perfect light distribution
- minimum light loss
- continuously focusable
- always full control - these Wide Eye attachments work with 8 barn door leaves
- even better - the barn door leaves can rotate (another dedolight patent)

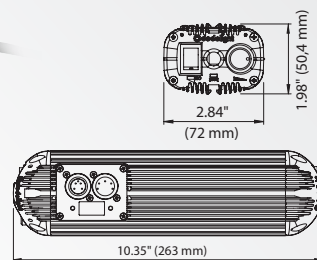
# NEW: HIGH TECH NOISELESS MOSFET DIMMERS - ALSO WITH DMX

## DLDIM2000

120V max. 1 kW

## DLDIM2000-DMX

DLDIM2000 with integrated DMX control  
This dimmer can control many dedolight tungsten focusing and soft lights along with lights of other manufacturers up to 2 kW at 230-240 V or up to 1 kW at 100-120V. Since these DMX-controlled dimmers are



noiseless, they can be mounted next to the light. Mounting devices for attaching to pipes via clamps are available. As a result, many studios will be able to eliminate external dimmers which

often generate noise and require a room of their own. Our high tech dimmers bridge the missing gap of DMX for all halogen studio lights.

## dedolights with integrated DMX-dimmers

In studios you will find that the moving lights are always DMX controlled. Most Kinoflo lights can be DMX controlled. Other focusing lights are usually not DMX controllable. This is one of the reasons why our dedolight 150 W DMX controllable light heads (DLHM4300DMX) which offer a light output similar to a traditional 500 W Fresnel, are used in many TV studios. Also our daylight light heads are DMX controllable.

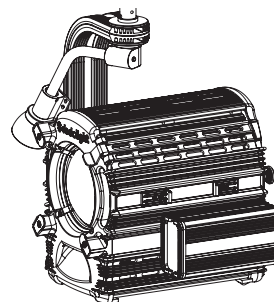
150W light head with light output similar to traditional 500W Fresnels (DLHM4-300DMX)



650W pole operated light head (DLH650PO-DMX)



1000W pole operated light head (DLH1000TPO-DMX)



The dedolight DLH400DT daylight fixture, with its DEB400DT ballast is also available with DMX control. Our new 1200 W daylight source (DLH1200D) and DEB1200D ballast are equipped with integrated DMX control as a standard.

## 12/24 V In-line Dimmer

Working with batteries, over voltage can occur quite frequently. As an example - professional video camera batteries which are nominally called 12 V batteries are no longer true 12 V versions but mostly 14.4 V - and when they are freshly charged they provide up to 17 V. The DLDIM-BAT dimmer solves this problem.

### DLDIM-BAT

The Classic dedolights work with 12V and / or 24V special low voltage lamps. These lamps offer the following advantages:

- extreme high light output for a halogen system with 40 lumen per Watt (standard high voltage halogen lamps only provide approximately 20 lumen per Watt)
- resistant to shock and vibration (which is definitely not a virtue of high voltage halogen lamps)
- drastically lower purchase cost (75% less)
- longer life expectancy
- BUT: All halogen lamps which offer very high light outputs are sensitive to over voltage.



### Tech Specs: DLDIM-BAT Inline Dimmer

- Switch the voltage selector to the 12V - DC position - Now you can feed up to 18V, but the maximum output voltage is limited to 11.8V. This is suitable for 12V - 20, 50, 75 and 100W lamps.
- Switch the voltage selector to the 24V - DC position - Now you can feed up to 36V, but the maximum output voltage is limited to 23.5V. This is suitable for 24V - 50, 100 and 150W lamps.
- The lamps will be gently started (soft start) when switched on.
- Recognition of defective or missing lamp (blink code with LED indicator)
- Short circuit and overload protection
- Smooth dimming range 3-100%
- Robust and small housing
- Low voltage cutoff at 10.2V respectively 20.4V for protection of batteries
- When input voltage is lower than 12V the maximum output (100%) cannot be reached. Similarly, in 24V mode the maximum is not possible when the input is below 24V

# BACKGROUND FX GLASS

To be used with our DP1S Imager (Ø 55 mm), DP1 (Ø 66 mm) and DP400 (Ø 100 mm) imagers. Background FX glass quickly change any flat, drab background into a stunning piece of set design.

With eleven different patterns and eight colors, dozens of effects can be created. Focusing and defocusing the pattern changes the mood.

Sandwich them together with standard metal gobos and you have an even wider choice.

All effects and colors are also available for the DP1S (Series DLED2) and the DP400 (Series 400) imager.

For the Series DLED2 is no separate Effect Glass Holder required.



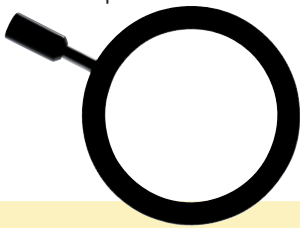
Each pattern is available in 8 highly saturated dichroic colors:

Blue (B), Purple (P), Light Blue (LB), Red (R), Magenta (M), Yellow (Y), Turquoise (T), Light Green (LG)

Sample order code: DFXST3-B = „Waffle“ blue – for Series DLED2

DFXT3-B = „Waffle“ blue – for Classic Series

DFXT4003-B = „Waffle“ blue – for Series 400

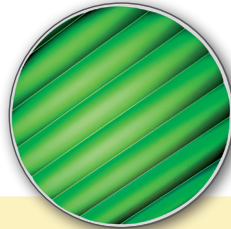


DFXH

Effect Glass Holder for Ø 66 mm (M size)

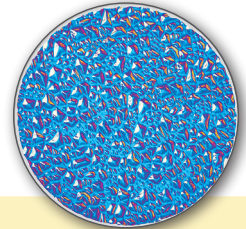
DFX400H

Effect Glass Holder for Ø 100 mm (A size)



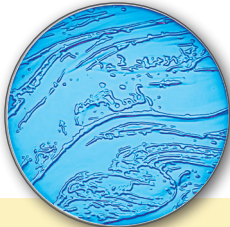
DFXT4

Effect Glass "Waves"



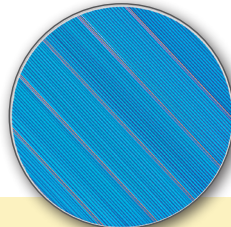
DFXT8

Effect Glass "Crystal"



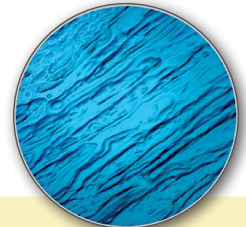
DFXT1

Effect Glass "Harmony"



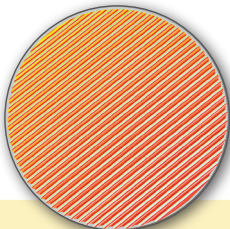
DFXT5

Effect Glass "Lamello"



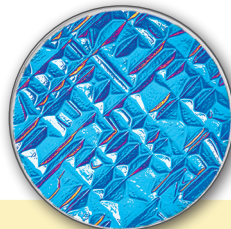
DFXT9

Effect Glass "Flow"



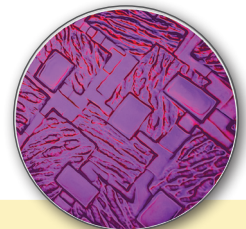
DFXT2

Effect Glass "Groove"



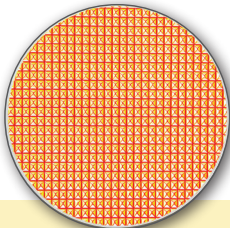
DFXT6

Effect Glass "Mystic Squares"



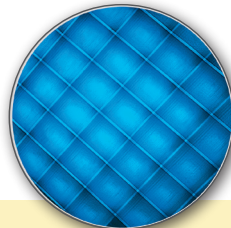
DFXT10

Effect Glass "Farrago"



DFXT3

Effect Glass "Waffle"



DFXT7

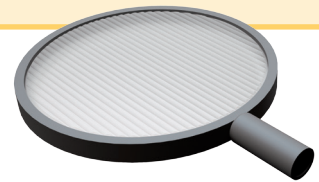
Effect Glass "Cakester"



DFXT11

Effect Glass "Cells"

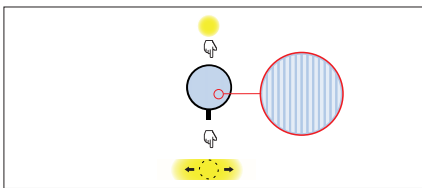
# DIRECTIONAL BEAM SPREADER DWAFX



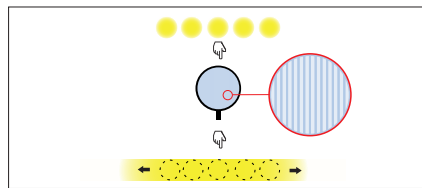
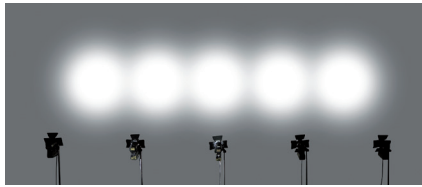
A special structure in a metal frame / holding ring – These unique light-shaping attachments spread the defined beam of the focusing dedolight in one direction. The orientation of the beam spread can be rotated.

- high transmission
- practically no diffusion

The effect on a dedolight:



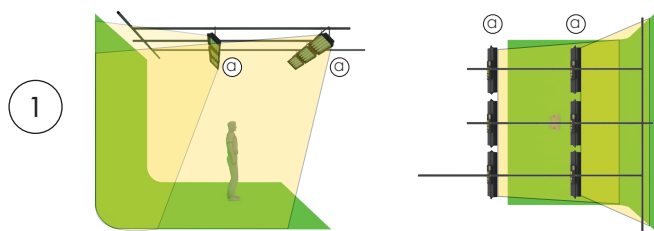
On multiple dedolights:



Can also be used for a combination of several dedolights in spot or medium focus position (all with equal focus and intensity settings – DMX), placed in parallel direction to achieve a uniform band of light.

Similar effects have always been possible on focusing studio lights or lights with a defined beam angle by adding a gel filter called "brushed silk". This is still valid, but will always produce a noticeable amount of diffusion at the same time as spreading the light beam in one direction.

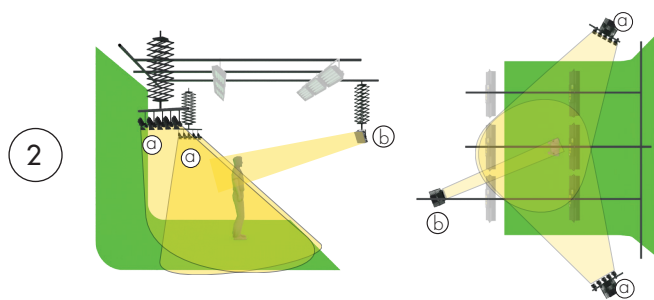
With the unequalled dedolight and its clean beam concept, these directional beam spreaders DWAFX allow the spreading of the light without causing diffusion.



In virtual studios, great care is taken to light the green background and floor evenly and free of shadows.

(1a) This for example with 2 rows of KinoFlo Image 80 lights. In most cases, the lighting on the lonely person in the green desert looks relatively sad and unstructured when shooting a medium shot or close-up in such situations. It rarely ever happens that the light on the person has anything to do with the lighting found in the virtual background.

## Use of DWAFX beam spreader for backlight and contour light in a virtual studio



Placing whole banks of parallel dedolights on both sides (2a), controlling each bank of the lights in an identical way by DMX control, the actor can be lit from the knee upward without causing any noticeable shadows on the green floor. Even if the dedolights are placed in such a way that they are looking downward at a moderate angle, the shadows can be projected to fall outside of the 'action area'.

Also adding an extra light source (2b) to bring some life to the eyes, it is possible to adapt the lighting to closely match the virtual background. Eventually we will have some videos explaining different approaches for lighting methods for virtual studios.

- For tungsten use dedolights DLHM4-300DMX or DLH650DMX
- For daylight use dedolights DLED4.1-D or DLED9.1-D
- For controlled changes of color temperature for back light and contour light use bicolor versions of DLED4.1-BDMX or DLED9.1-BDMX

These directional beam spreaders are available to fit the classic focusing dedolights such as the DLH4, DLHM4-300, DLH200DT and the new DLED4.1 – DWAFX (diameter 76mm)

Available for Series 400 dedolights such as the DLH400DT, DLH650 and DLH436 also the new DLED9.1 – DWAFX400

Also for our Series 1200 lights such as the DLH1200D, DLH1000T and our largest focusing LED fixture, the DLED12.1 – DWAFX1200

# SLIDE PROJECTIONS FOR STUNNING EFFECTS AND TEACHING LIGHTING SETUPS FOR VIRTUAL STUDIOS

With the slide holding attachments which are available for all series of dedolight, slides can be projected.

Usually this wants to be done from an angle, so that the person in front of such a projection will not be touched by the light from the slide projection. This can be done from an angle of 45° or 30°.

Maintaining equal focus from left to right can be achieved by the adjustment of the image plane in our projection devices (left-right as well as up-down).

## For classic dedolight

DP3 imager/projection attachment  
Use with DLH4, DLHM4-300 and DLH200DT lights for gobo and slide projection.

Choice of projection lenses:  
50, 60, 85, 150 and 185 mm, as well as two zoom lenses 70-120 mm and 85-150 mm.



## For our larger lights

The DP400 imager/projection attachment in combination with a DP1200CON or DP1200CON-WA condenser module may be used with the DLH1200 metal halide light head as well as the DLED12.1 focusing LED light head.

DP1200CON - Standard  
For lenses 150-230 mm focal length (also possible with 100 mm)

DP1200CON-WA – Use for wide-angle projection  
lenses 70-100 mm (150 mm is also possible)

## For light heads of Series 400

For DLH400DT, DLH650 and also the new DLED9.1, 90W light you can use DP400 imager / projection attachment with slide projection



slide projection in focus

The background will always appear in focus when using cameras with a small sensor and short focal length lens. Sometimes the effect of a greater separation or space can be achieved by throwing the projected background out of focus – easily done by defocusing the projection lens on our imager.

If further refinement of such effects is wanted, e.g. on a landscape setting, this is possible (by virtue of our moving image plane in the



slide projection out of focus

imager) so that the foreground (e.g. the lower part of the image) can be kept in focus, whilst half or two-thirds of the upper image on the projected background can drift out of focus, again creating the illusion of greater depth.

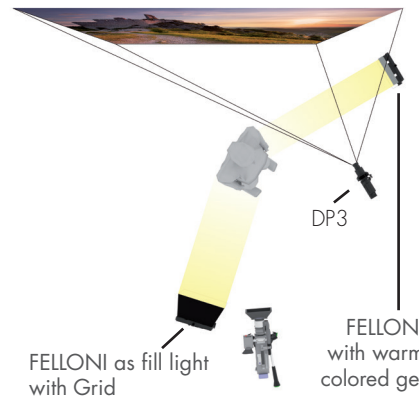
This is also a subject which we will describe in one of our future videos, to show how easy such effects can be achieved.



No distortion



Distorted slide for 30° or 45° projection



For the projections of 45° or 30° angle we usually distort the slides in the computer before printing them, and then they will distort on the background onto which the slides are projected so that parallel horizontal description can be maintained. Such slide projections can be used as an easy background projection without the hazards of disturbing reflections from green or blue backgrounds. This may occur when there is not enough space between the talent and the green or blue background.

To teach lighting for virtual studios, a slide projection can be a wonderful tool. In the same view for the eye, as well as the camera, the projected background image appears at the same time as you can see the setting of the lighting on the talent. Trying to match the lighting on the talent with the character of the lighting in the background is often easily achieved, sometimes aided by the addition of color effect filters.

For the aspiring media student this can be a great learning experience, also for choosing suitable light sources to make the lighting on the talent melt in a natural way into the virtual background (Visibly projected background), and still separate the talent by lighting from the background.

## Which slide formats to use for classic dedlight

When you are projecting onto a background, you will not want to see this projection on a person in front of the projected background. Therefore you will place the projector 30 degree (or 45 degree) away from camera axis. With our slide projections, we can adjust the image plane (in 2 axis) and control focus even for projection from an angle.

But we will create key stoning – the projected image will appear distorted.

To compensate key stoning / distortion when projecting from an angle, we pre-distort the images in the adverse direction (in Photoshop). Then the projected image will be displayed without distortion.

Today many backgrounds are created with green screen technology – slide projections occasionally offer an interesting alternative. Even if in the end you will use green screen, the slide projection offers a perfect and direct exercise for matching the lighting on the talent with the character of light in the background.

## Our slide projectors come in 2 versions.

### DP3

A complete unit for the classic dedlights DLH4, DLHM4-300, DLH200DT (see page 38) for use with modified 35 mm slide frames (free window 35 mm wide, 32 mm high).

Order code: DPSFD

For projection with 85 mm lens from 30 degree angle, distort top and bottom with 3.4 degree (image height will be 32 and 25.5 mm left/right)

### DP400SHA

Module for our larger DP400 imager/projector (see page 38). Uses regular slide frames 2 ¼ x 2 ¼ (60 x 60 mm).

Order code: DP400SF

For projection with 150 mm lens from 30 degree angle, distort top and bottom by 5.7 degree, resulting in image height 60 and 48 mm (left/right)

### Our service for slide production with your own images

Using your own images – depending on the application – you may want to make sure that you are in possession of the rights to these images. Transmit the images to us and we can take care of suitable pre-distortion, developing and framing.

Order code: DPSCD (for DP3)

Order code: DP400SCD (for DP400SHA)

It is best to use slide frames with no protective glasses.

It may be advisable to have several duplicates made, if you want to use the same slide image for a longer period.





**Dedo Weigert Film GmbH**

Karl-Weinmair-Straße 10  
D-80807 Munich, Germany  
Phone: +49 - (0)89 - 356 16 01  
Fax: +49 - (0)89 - 356 60 86

[info@dedoweigertfilm.de](mailto:info@dedoweigertfilm.de)  
[www.dedoweigertfilm.de](http://www.dedoweigertfilm.de)



**DEDOTEC USA, INC.**

48 Sheffield Business Park  
Ashley Falls, MA 01222  
Phone: +1 (413) 229 - 2550  
Fax: +1 (413) 229 - 2556

[www.dedolight.com](http://www.dedolight.com)  
E-mail: [info@dedolight.com](mailto:info@dedolight.com)